

# HOLCOMBE, FAIR & LANE

## REAL ESTATE

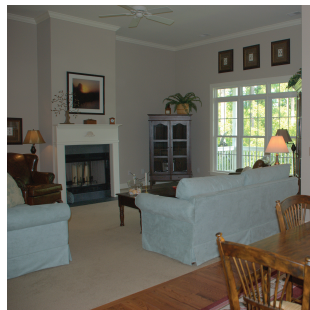


**HUGER  
SINKLER, II**

*specializing in rural  
land and residential  
properties for sale  
or lease on John's Island  
and Wadmalaw Island*



- \* Elevated custom home in gated community
- \* 3 Bedrooms, 2.5 baths with 2,150 sqft
- \* Gourmet kitchen with high-end appliances and custom cabinetry
- \* Greatroom with wood burning fireplace
- \* One level living area with screened-in porch and deck
- \* Master suite with ensuite bath, huge closet space and access to screened-in porch
- \* High ceilings throughout, make home open and spacious
- \* Workshop space and ample room for storage
- \* Polly Point Plantation is a low-density gated community
- \* Community has shared tidal dock with floater



### 1404 Polly Point Plantation

Wadmalaw Island, SC 29487

MLS No. 1318905

Offered at \$425K



Holcombe, Fair & Lane  
1071 Morrison Drive  
PO Box 668  
Charleston, SC 29403  
Tel: (843)722-2642  
Fax: (843)720-5939

**WWW.HFLCHARLESTON.COM**  
**HUGER@HFLCHARLESTON.COM**  
**843.412.3189**