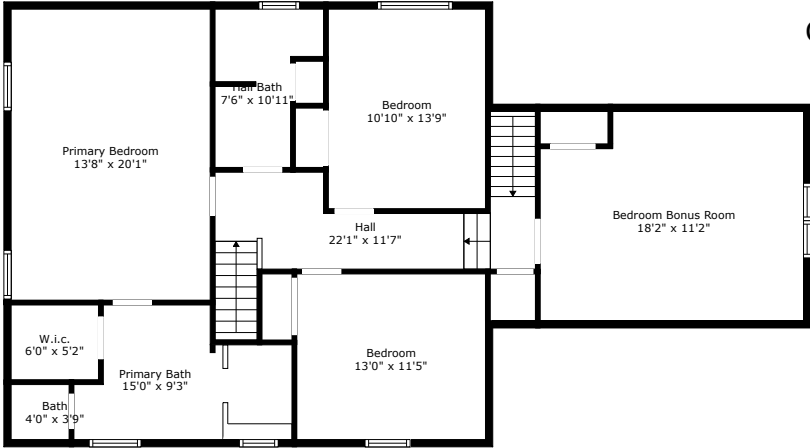
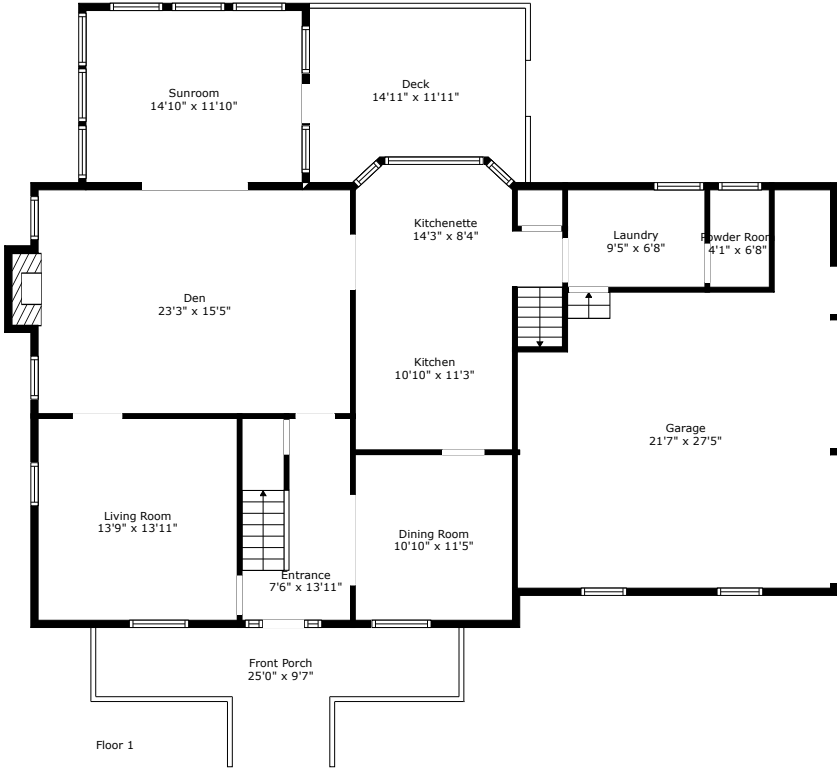


109 Quinby Street

Gadsden Acres | Summerville, SC 29483



Floor 2



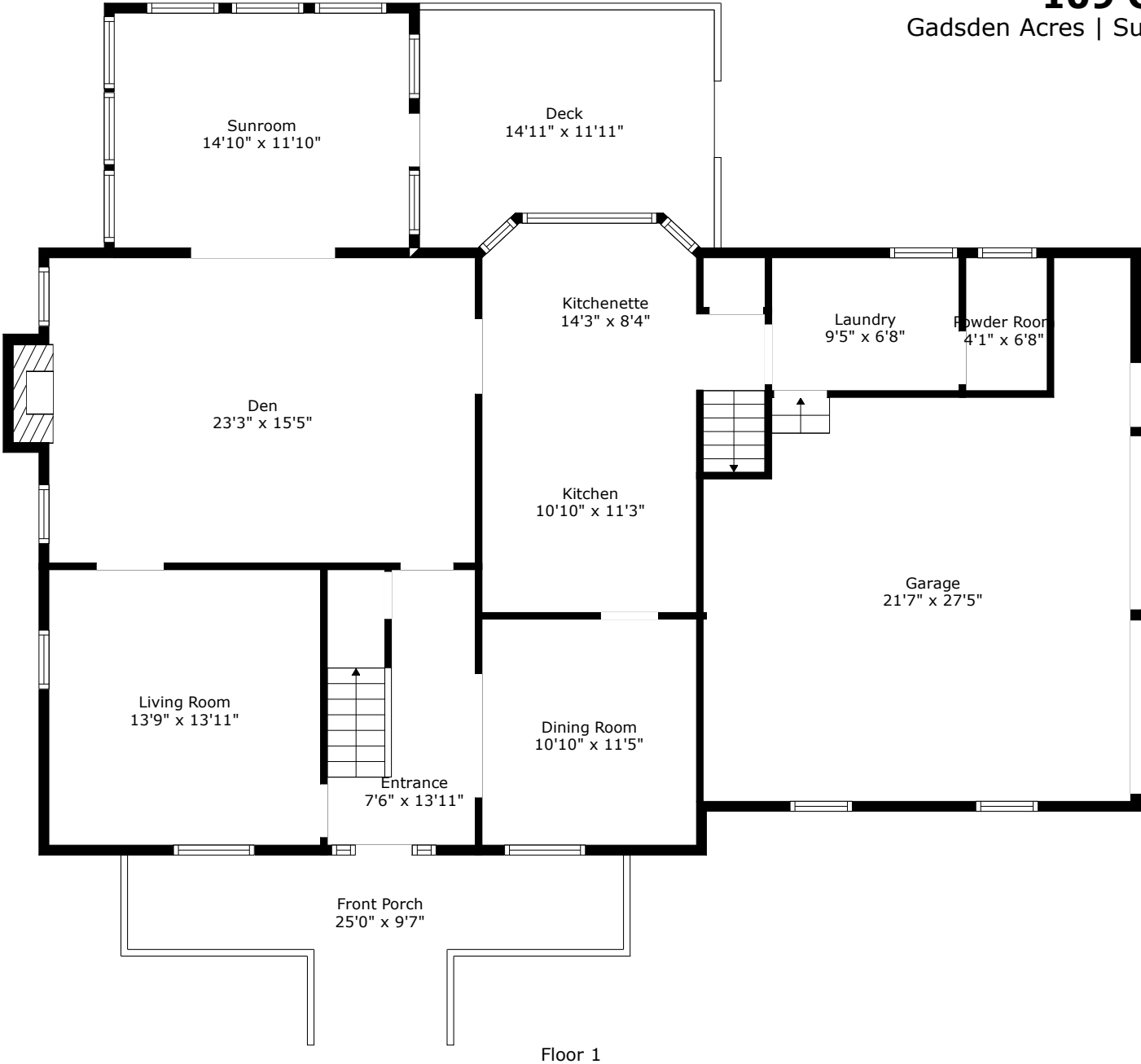
Floor 1

GROSS INTERNAL AREA
 FLOOR 1: 1455 sq. ft, FLOOR 2: 1225 sq. ft
 EXCLUDED AREAS: GARAGE: 453 sq. ft, DECK: 162 sq. ft, FIREPLACE: 6 sq. ft,
 LOW CEILING: 59 sq. ft
 TOTAL: 2680 sq. ft

Measurements Are Calculated By Cubicasa Technology. Deemed Highly Reliable But Not Guaranteed.



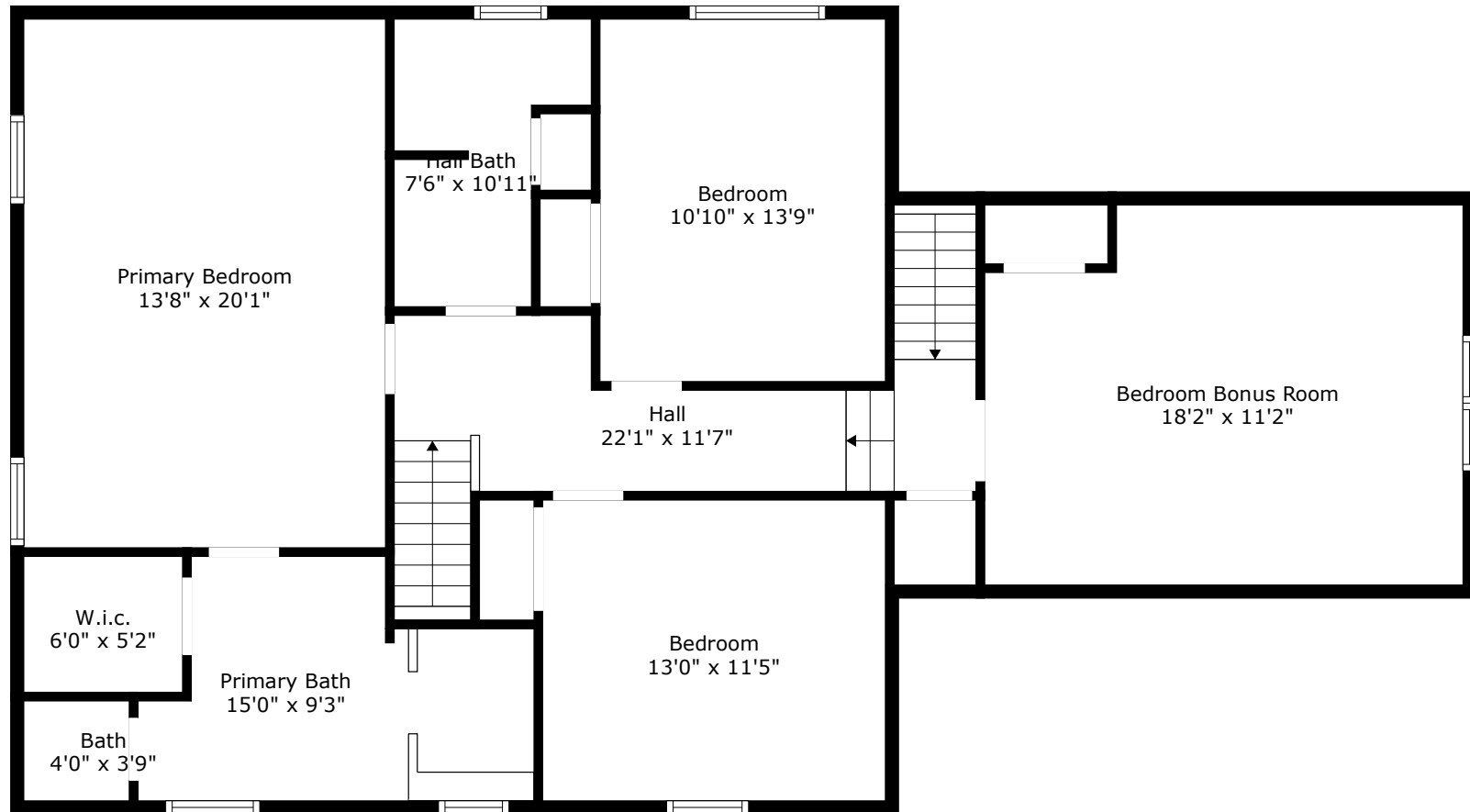
109 Quinby Street
Gadsden Acres | Summerville, SC 29483



GROSS INTERNAL AREA
FLOOR 1: 1455 sq. ft, FLOOR 2: 1225 sq. ft
EXCLUDED AREAS: GARAGE: 453 sq. ft, DECK: 162 sq. ft, FIREPLACE: 6 sq. ft,
LOW CEILING: 59 sq. ft
TOTAL: 2680 sq. ft

Measurements Are Calculated By Cubicasa Technology. Deemed Highly Reliable But Not Guaranteed.





Floor 2

GROSS INTERNAL AREA
FLOOR 1: 1455 sq. ft, FLOOR 2: 1225 sq. ft
EXCLUDED AREAS: GARAGE: 453 sq. ft, DECK: 162 sq. ft, FIREPLACE: 6 sq. ft,
LOW CEILING: 59 sq. ft
TOTAL: 2680 sq. ft

Measurements Are Calculated By Cubicasa Technology. Deemed Highly Reliable But Not Guaranteed.

