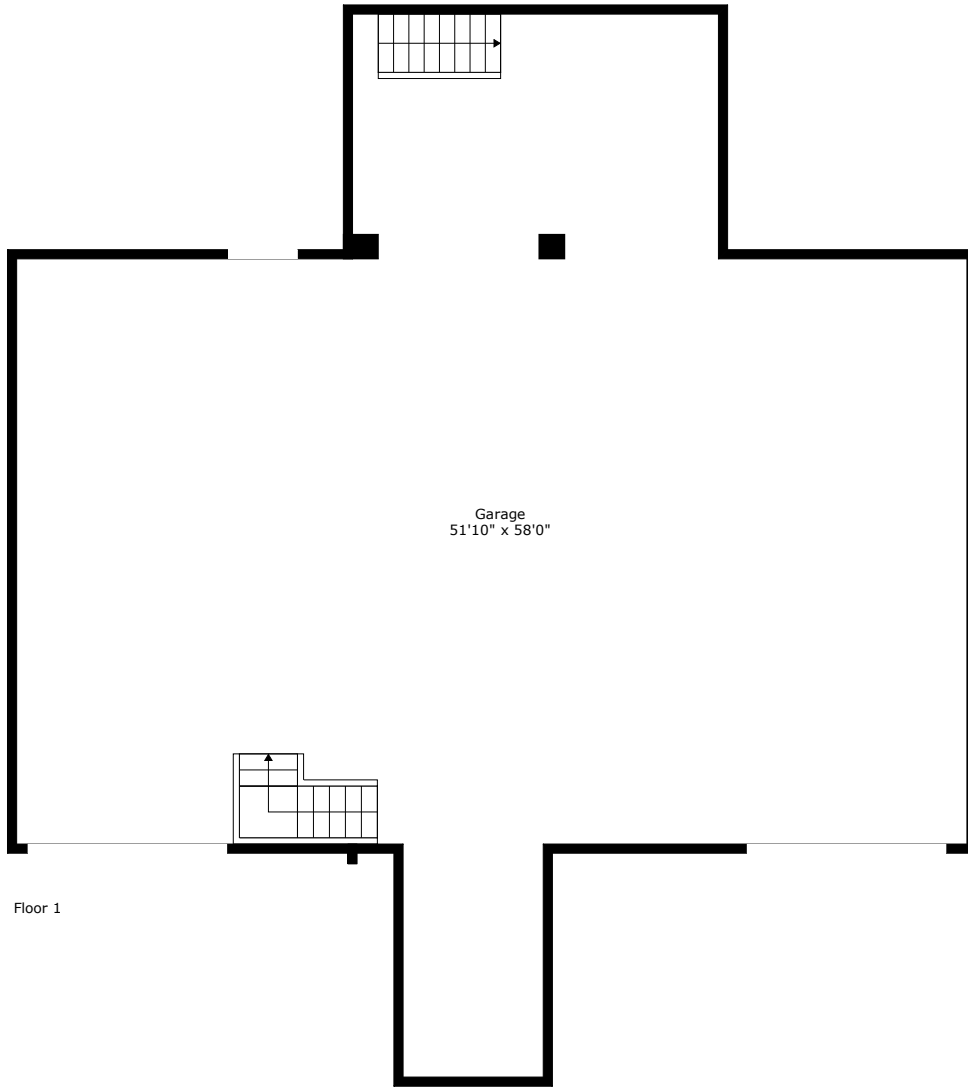
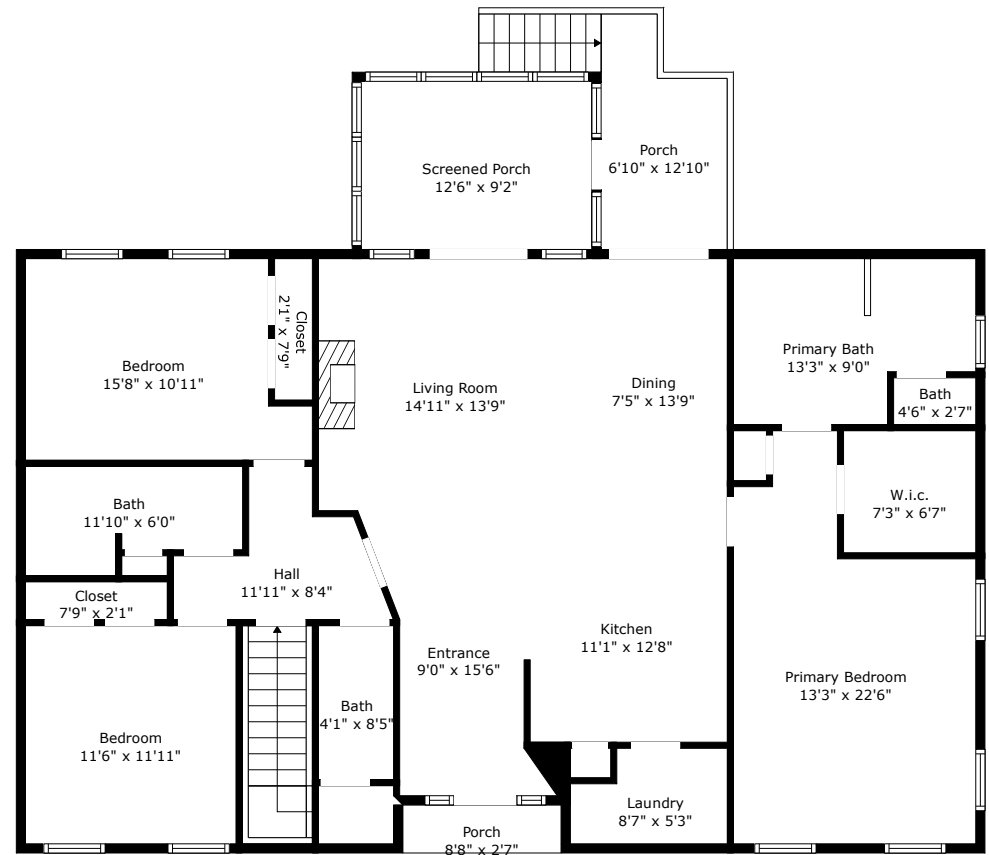


1610 Fiddlers Marsh Drive

Fiddlers Marsh | Mount Pleasant, SC 29464



Floor 1



Floor 2

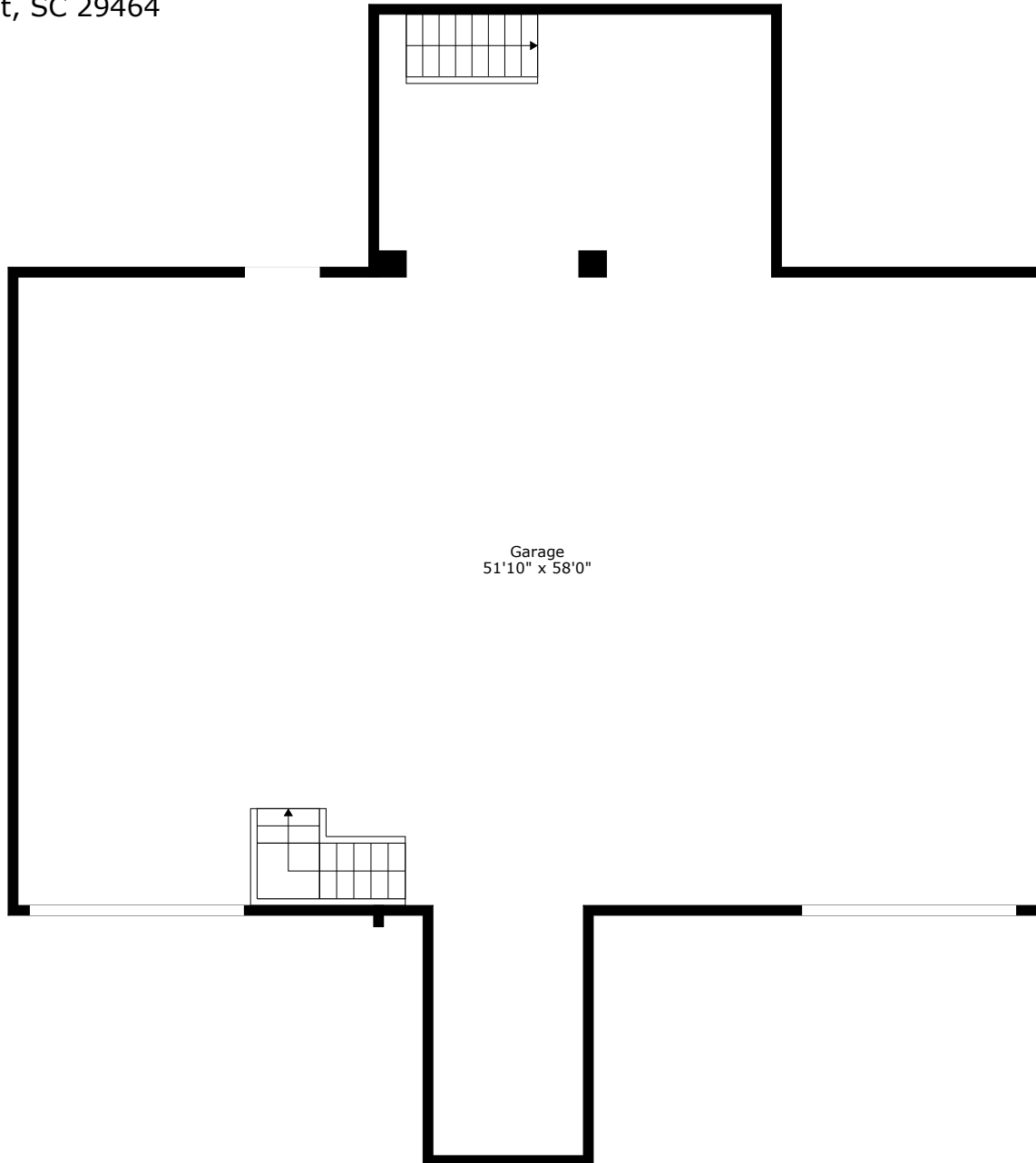
GROSS INTERNAL AREA
Below Ground: 0 sq. ft, FLOOR 2: 1745 sq. ft
EXCLUDED AREAS: GARAGE: 2018 sq. ft, PORCH: 98 sq. ft
TOTAL: 1745 sq. ft

Measurements Are Calculated By Cubicasa Technology. Deemed Highly Reliable But Not Guaranteed.



1610 Fiddlers Marsh Drive

Fiddlers Marsh | Mount Pleasant, SC 29464



Garage
51'10" x 58'0"

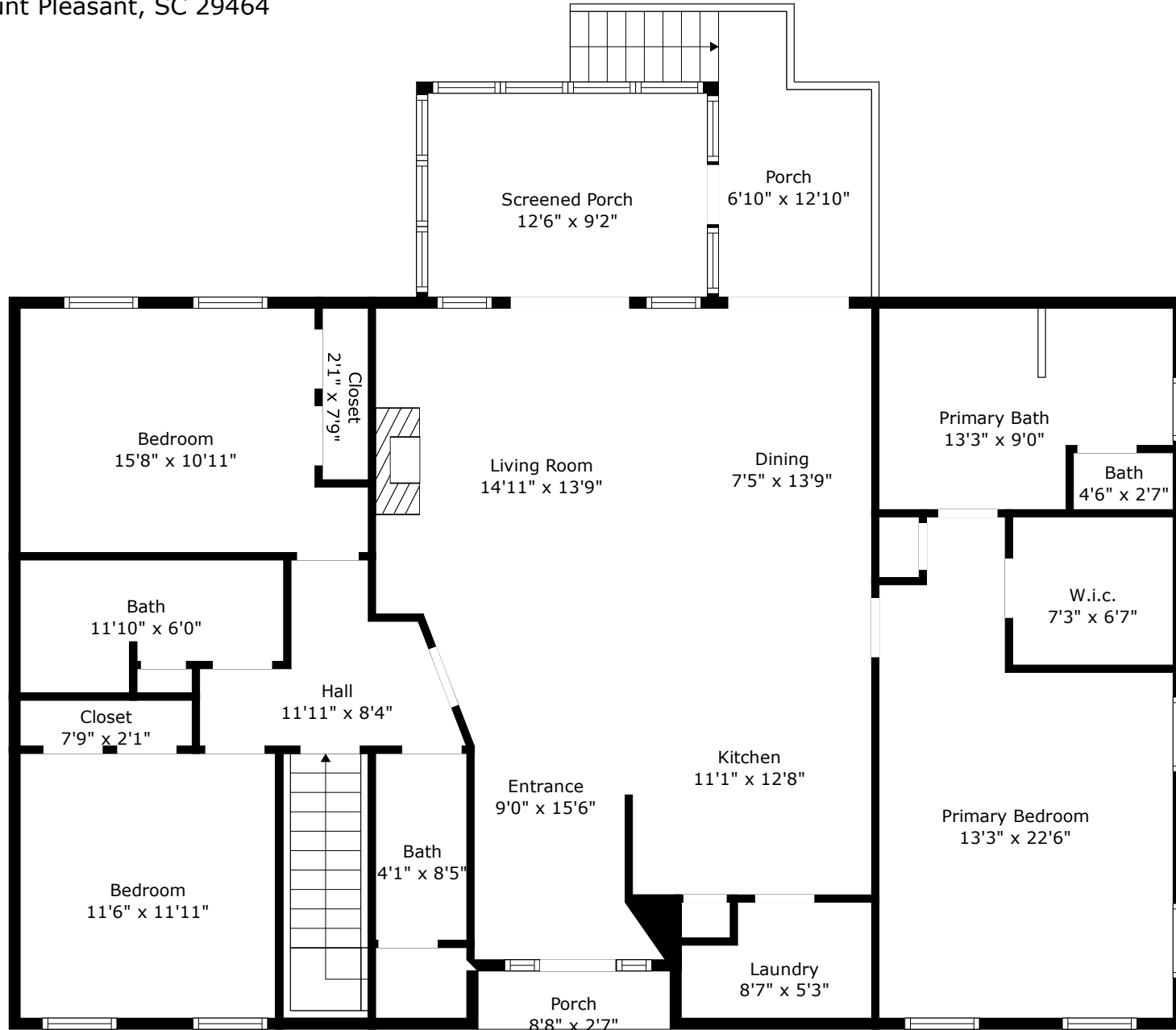
GROSS INTERNAL AREA
Below Ground: 0 sq. ft, FLOOR 2: 1745 sq. ft
EXCLUDED AREAS: GARAGE: 2018 sq. ft, PORCH: 98 sq. ft
TOTAL: 1745 sq. ft

Measurements Are Calculated By Cubicasa Technology. Deemed Highly Reliable But Not Guaranteed.



1610 Fiddlers Marsh Drive

Fiddlers Marsh | Mount Pleasant, SC 29464



GROSS INTERNAL AREA

Below Ground: 0 sq. ft, FLOOR 2: 1745 sq. ft

EXCLUDED AREAS: GARAGE: 2018 sq. ft, PORCH: 98 sq. ft

TOTAL: 1745 sq. ft

Measurements Are Calculated By Cubicasa Technology. Deemed Highly Reliable But Not Guaranteed.

