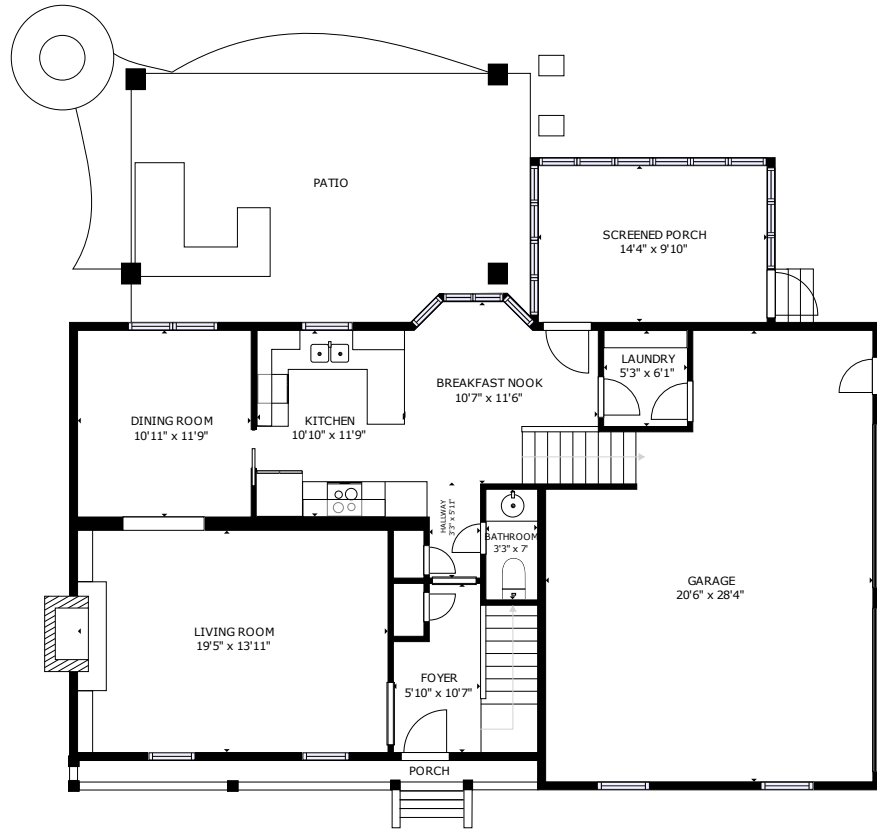
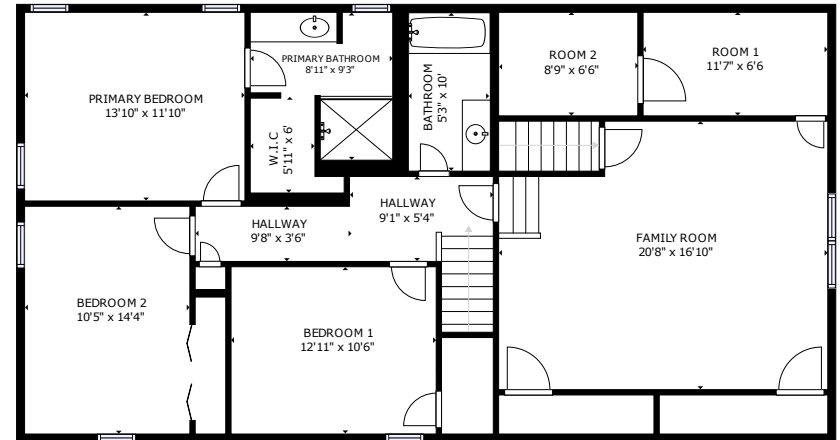


215 Botany Bay Court

Archdale | North Charleston, SC 29418



FLOOR 1

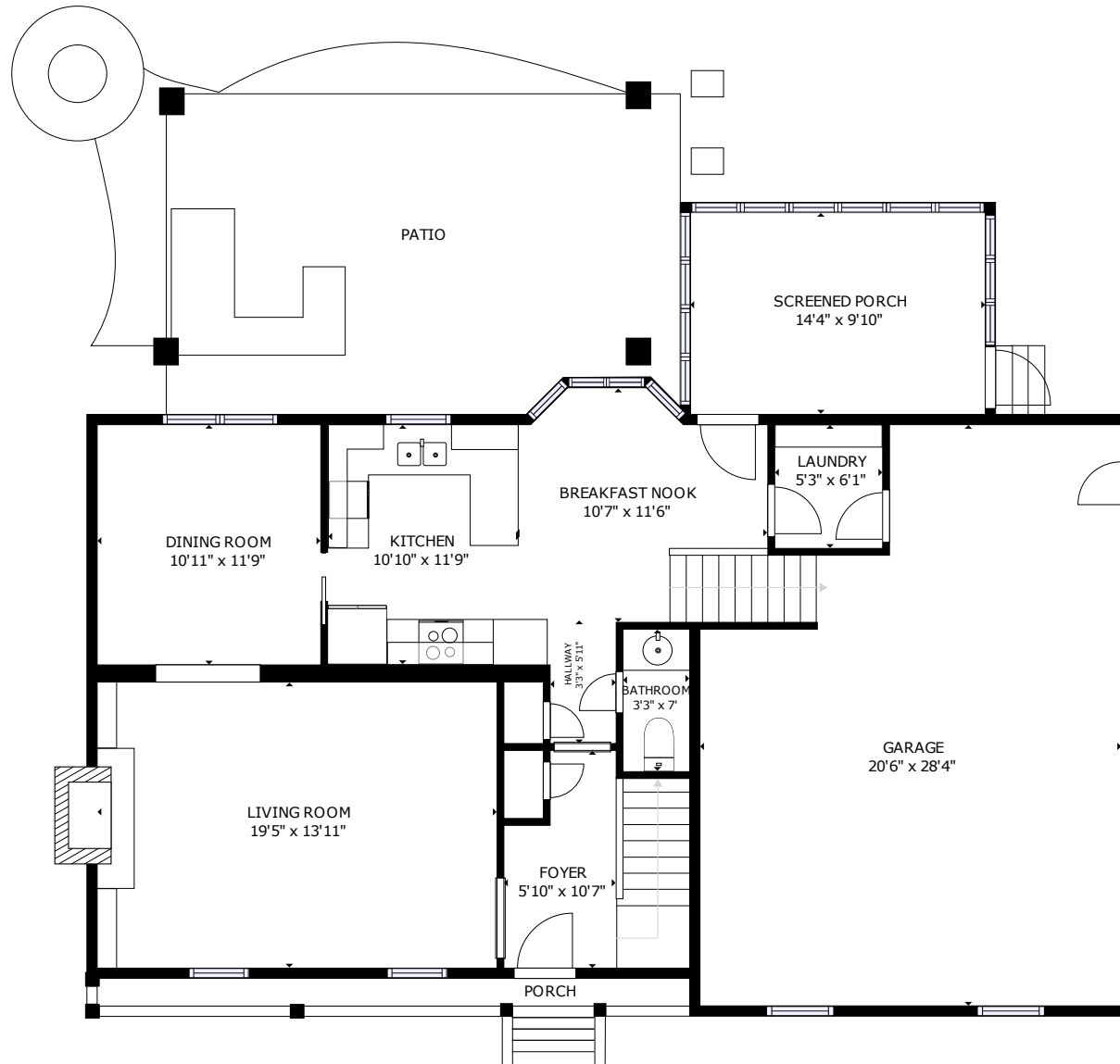


FLOOR 2

GROSS INTERNAL AREA
 FLOOR 1: 852 sq ft, FLOOR 2: 1334 sq ft
 EXCLUDED AREAS; GARAGE: 501 sq ft, PATIO: 382 sq ft, PORCH: 39 sq ft, SCREENED PORCH: 142 sq ft
 TOTAL: 2186 sq ft
 SIZES AND DIMENSIONS ARE APPROXIMATE, ACTUAL MAY VARY.

215 Botany Bay Court

Archdale | North Charleston, SC 29418

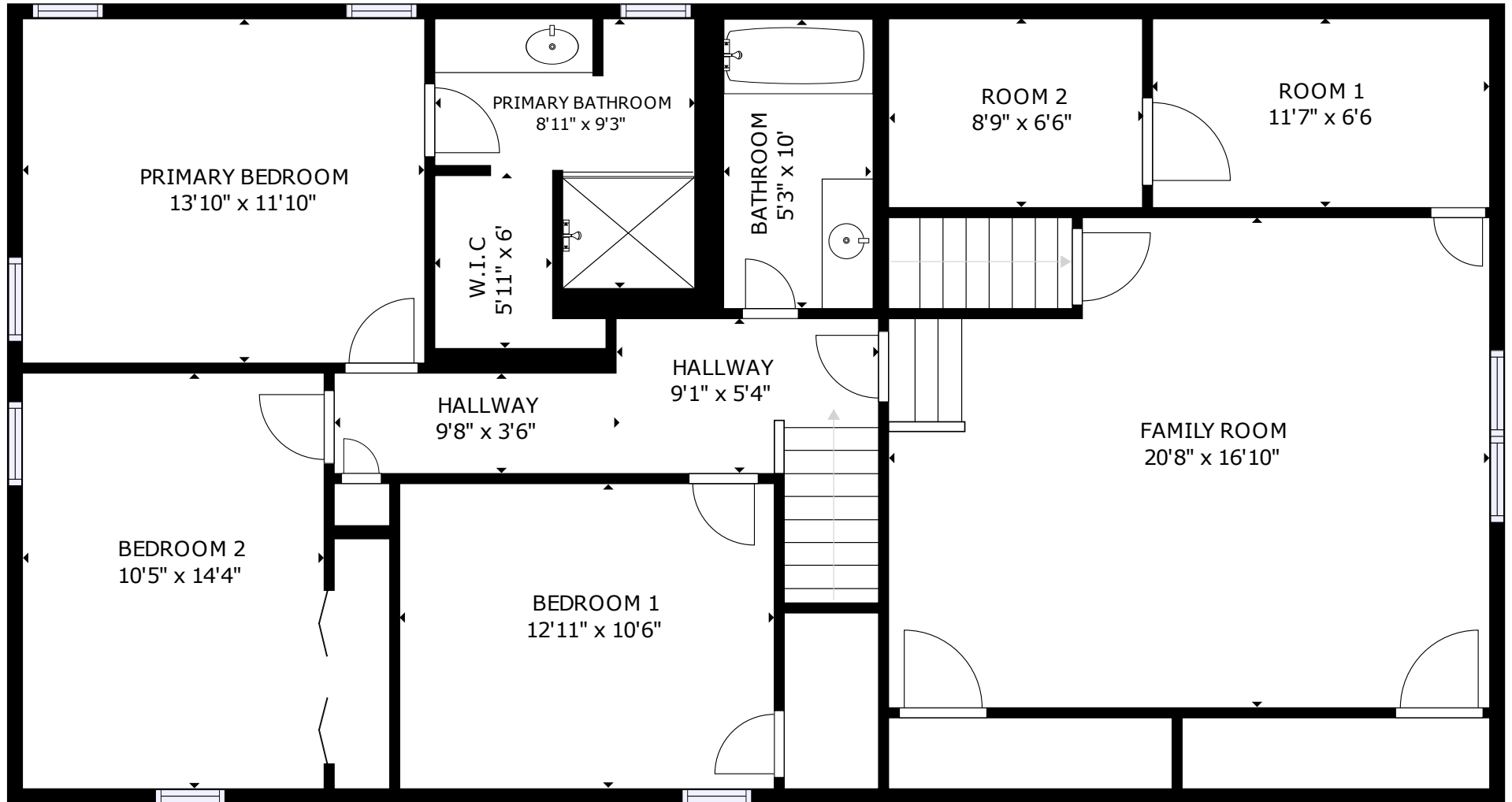


FLOOR 1

GROSS INTERNAL AREA
FLOOR 1: 852 sq ft, FLOOR 2: 1334 sq ft
EXCLUDED AREAS; GARAGE: 501 sq ft, PATIO: 382 sq ft, PORCH: 39 sq ft, SCREENED PORCH: 142 sq ft
TOTAL: 2186 sq ft
SIZES AND DIMENSIONS ARE APPROXIMATE, ACTUAL MAY VARY.

215 Botany Bay Court

Archdale | North Charleston, SC 29418



FLOOR 2

GROSS INTERNAL AREA
FLOOR 1: 852 sq ft, FLOOR 2: 1334 sq ft
EXCLUDED AREAS; GARAGE: 501 sq ft, PATIO: 382 sq ft, PORCH: 39 sq ft, SCREENED PORCH: 142 sq ft
TOTAL: 2186 sq ft
SIZES AND DIMENSIONS ARE APPROXIMATE, ACTUAL MAY VARY.