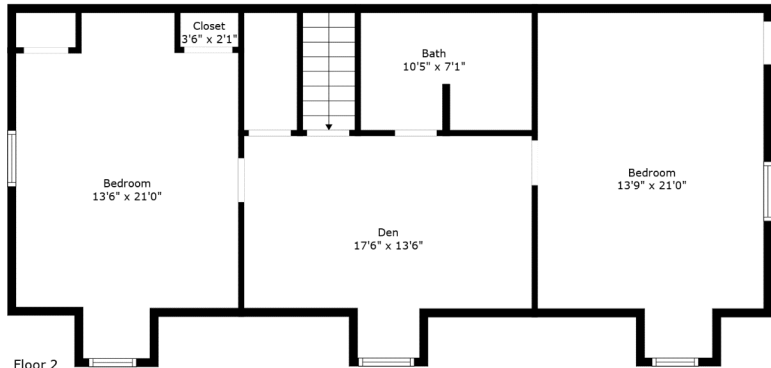
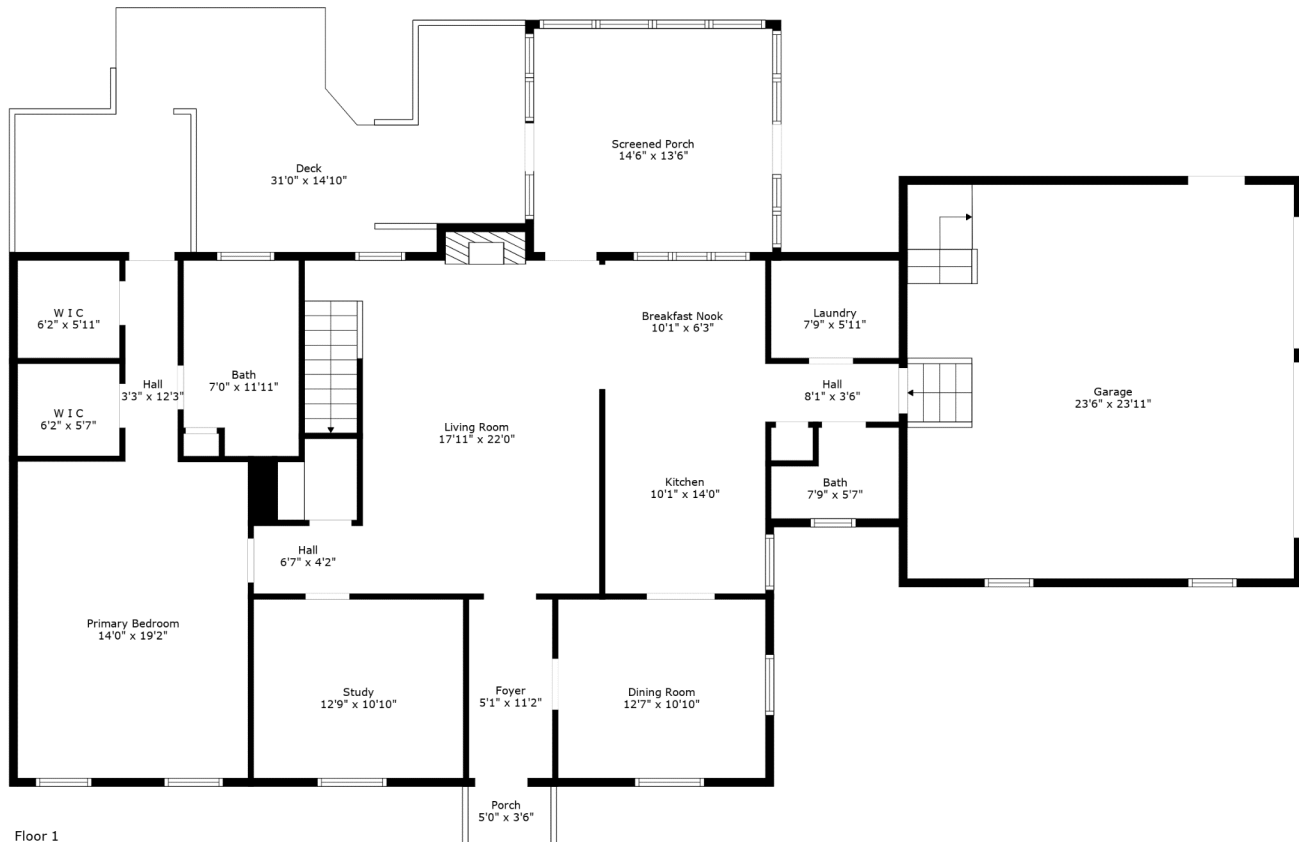


568 Woodspring Road

Commonwealth | Mount Pleasant, SC 29466



Floor 2



Floor 1

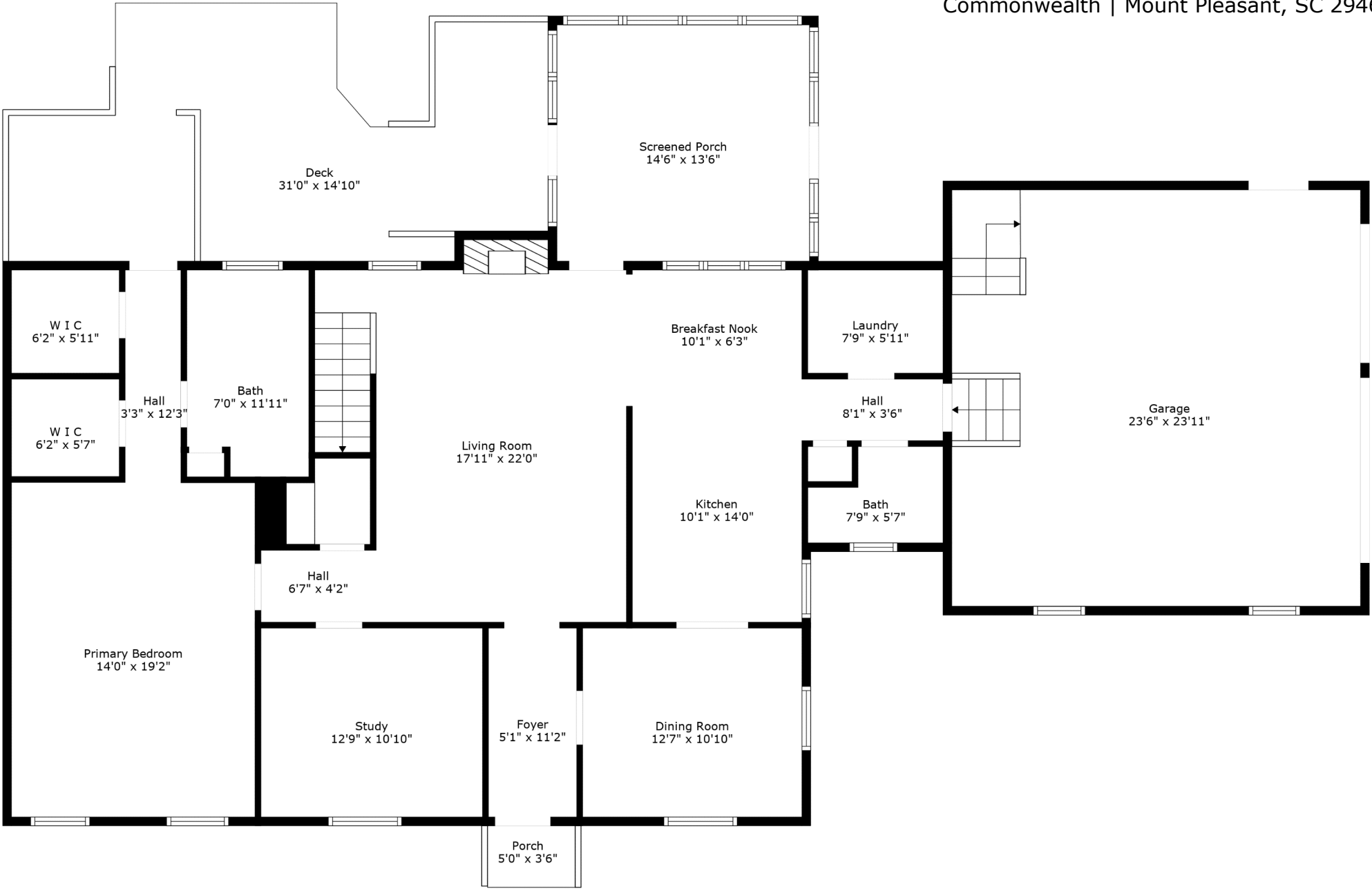
TOTAL: 2605 sq. ft
FLOOR 1: 1754 sq. ft, FLOOR 2: 851 sq. ft
EXCLUDED AREAS: GARAGE: 562 sq. ft, DECK: 366 sq. ft, PORCH: 18 sq. ft,
FIREPLACE: 6 sq. ft

Measurements Are Calculated By Cubicasa Technology. Deemed Highly Reliable But Not Guaranteed.



568 Woodspring Road

Commonwealth | Mount Pleasant, SC 29466

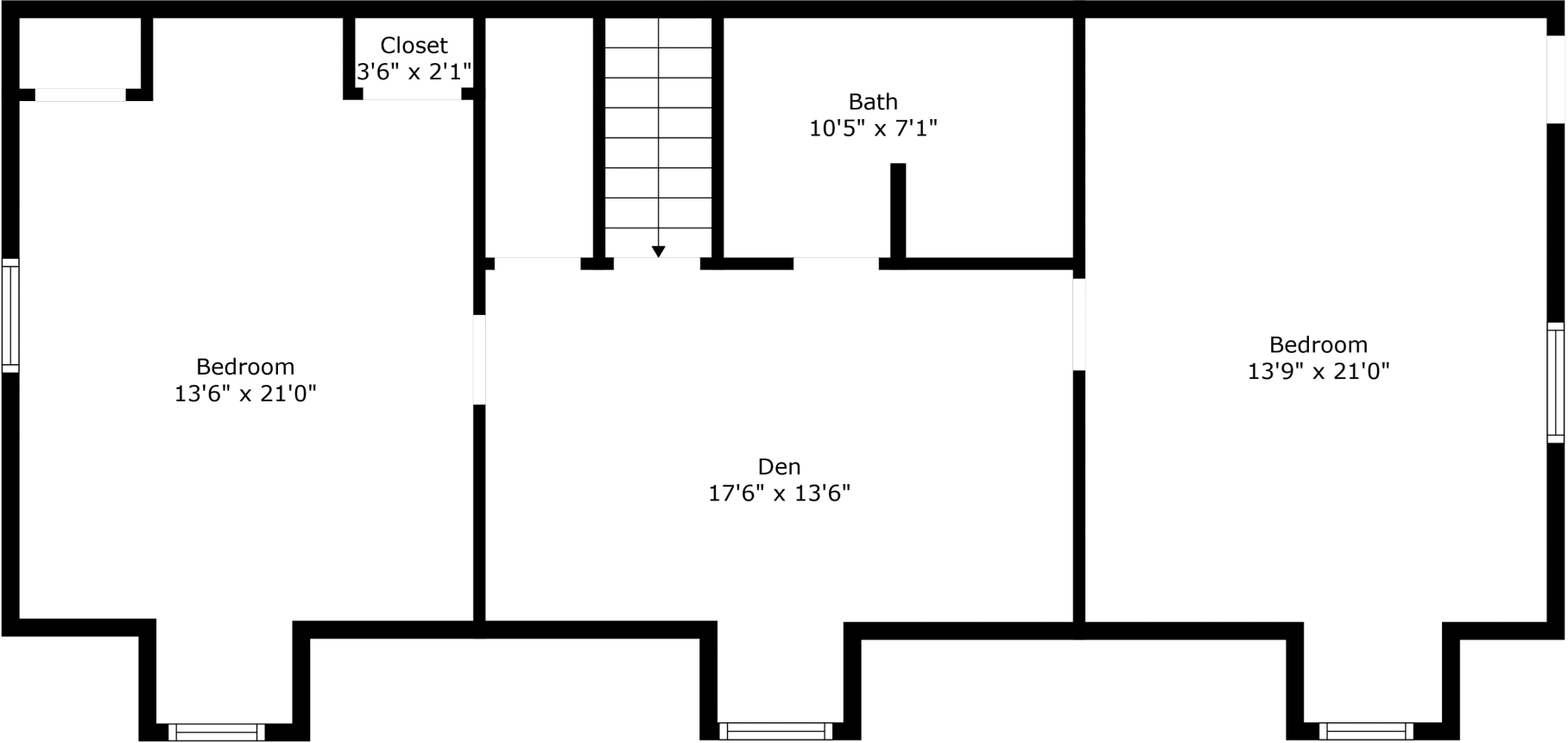


TOTAL: 2605 sq. ft
FLOOR 1: 1754 sq. ft, FLOOR 2: 851 sq. ft
EXCLUDED AREAS: GARAGE: 562 sq. ft, DECK: 366 sq. ft, PORCH: 18 sq. ft,
FIREPLACE: 6 sq. ft

Measurements Are Calculated By Cubicasa Technology. Deemed Highly Reliable But Not Guaranteed.



568 Woodspring Road
Commonwealth | Mount Pleasant, SC 29466



TOTAL: 2605 sq. ft
FLOOR 1: 1754 sq. ft, FLOOR 2: 851 sq. ft
EXCLUDED AREAS: GARAGE: 562 sq. ft, DECK: 366 sq. ft, PORCH: 18 sq. ft,
FIREPLACE: 6 sq. ft

Measurements Are Calculated By Cubicasa Technology. Deemed Highly Reliable But Not Guaranteed.

