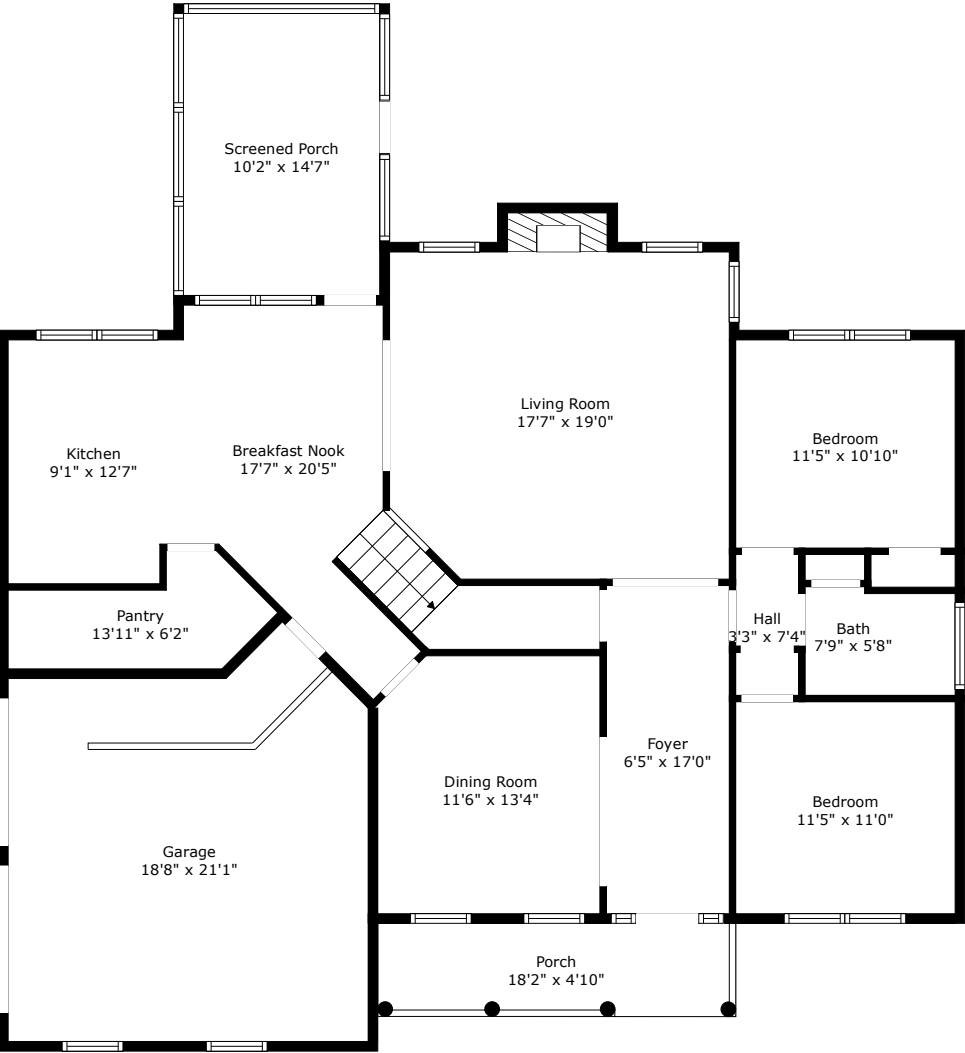
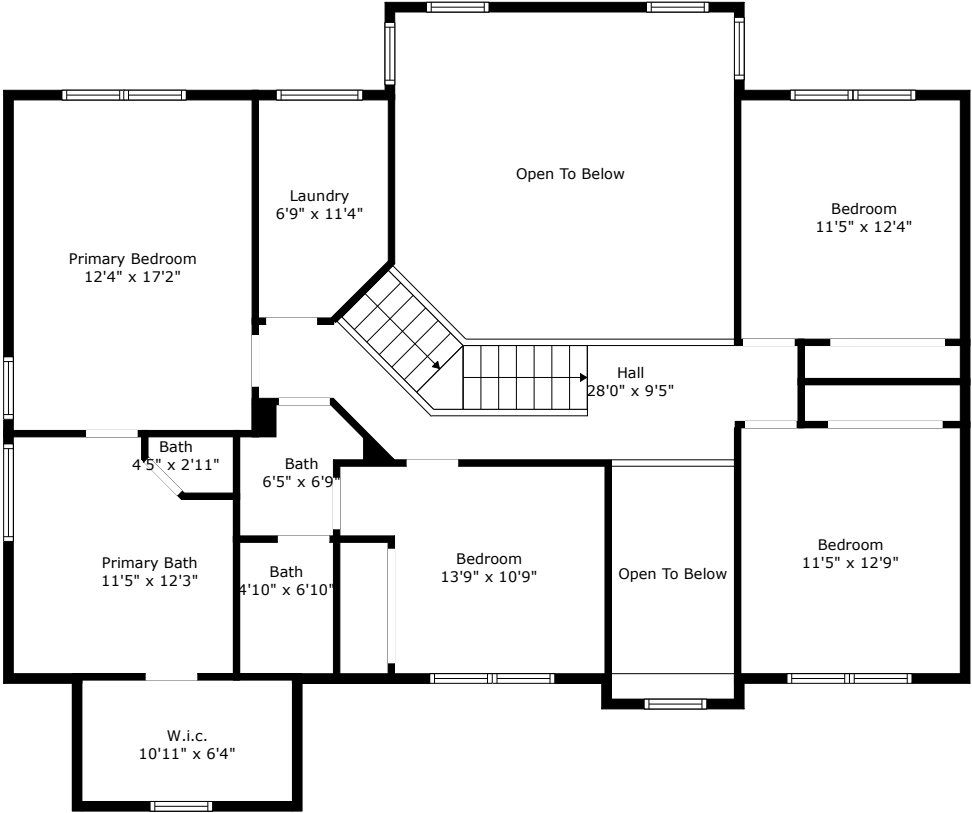


# 100 Duck Blind Court

Boykin Creek  
Summerville, SC 29483



Floor 1



Floor 2

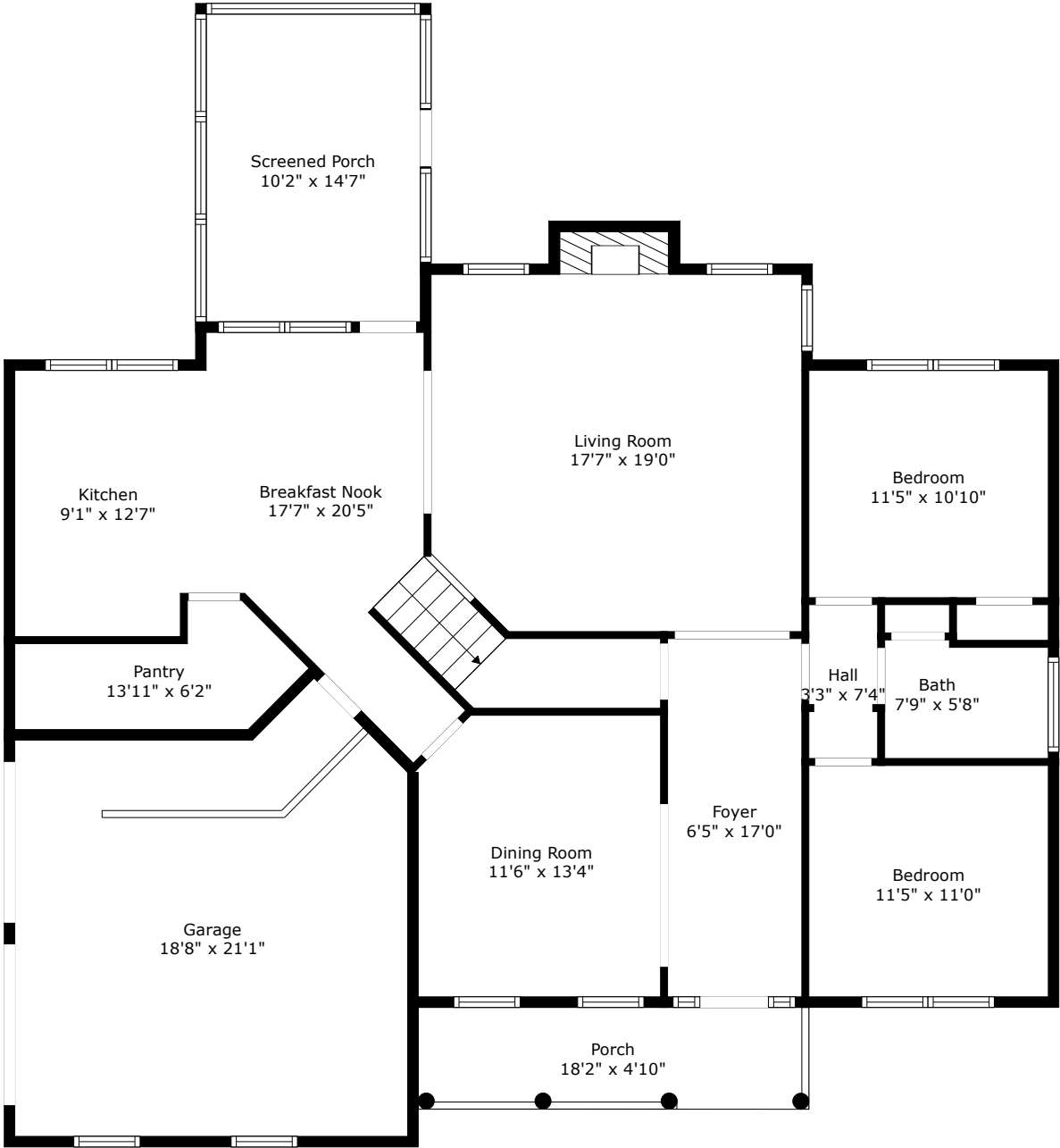
**TOTAL: 2550 sq. ft**  
FLOOR 1: 1312 sq. ft, FLOOR 2: 1238 sq. ft  
EXCLUDED AREAS: GARAGE: 359 sq. ft, SCREENED PORCH: 149 sq. ft, PORCH: 90 sq. ft,  
FIREPLACE: 8 sq. ft, OPEN TO BELOW: 369 sq. ft, LOW CEILING: 15 sq. ft

Measurements Are Calculated By Cubicasa Technology. Deemed Highly Reliable But Not Guaranteed.



# 100 Duck Blind Court

Boykin Creek  
Summerville, SC 29483



Floor 1

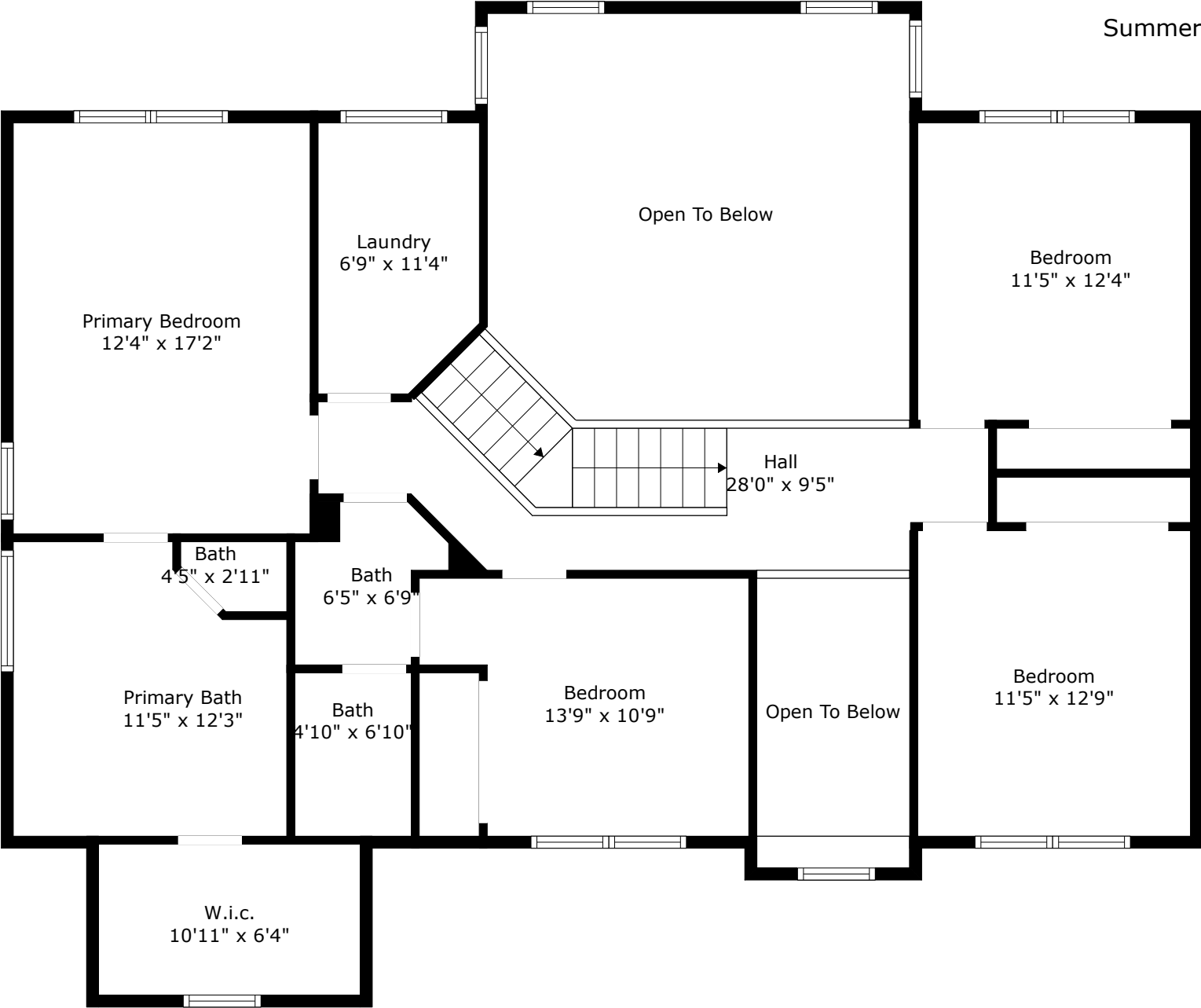
**TOTAL: 2550 sq. ft**  
FLOOR 1: 1312 sq. ft, FLOOR 2: 1238 sq. ft  
EXCLUDED AREAS: GARAGE: 359 sq. ft, SCREENED PORCH: 149 sq. ft, PORCH: 90 sq. ft,  
FIREPLACE: 8 sq. ft, OPEN TO BELOW: 369 sq. ft, LOW CEILING: 15 sq. ft

Measurements Are Calculated By Cubicasa Technology. Deemed Highly Reliable But Not Guaranteed.



# 100 Duck Blind Court

Boykin Creek  
Summerville, SC 29483



Floor 2

**TOTAL: 2550 sq. ft**  
FLOOR 1: 1312 sq. ft, FLOOR 2: 1238 sq. ft  
EXCLUDED AREAS: GARAGE: 359 sq. ft, SCREENED PORCH: 149 sq. ft, PORCH: 90 sq. ft,  
FIREPLACE: 8 sq. ft, OPEN TO BELOW: 369 sq. ft, LOW CEILING: 15 sq. ft

Measurements Are Calculated By Cubicasa Technology. Deemed Highly Reliable But Not Guaranteed.

