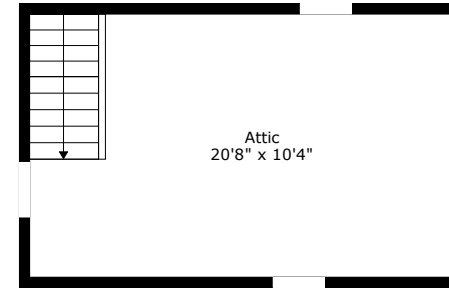
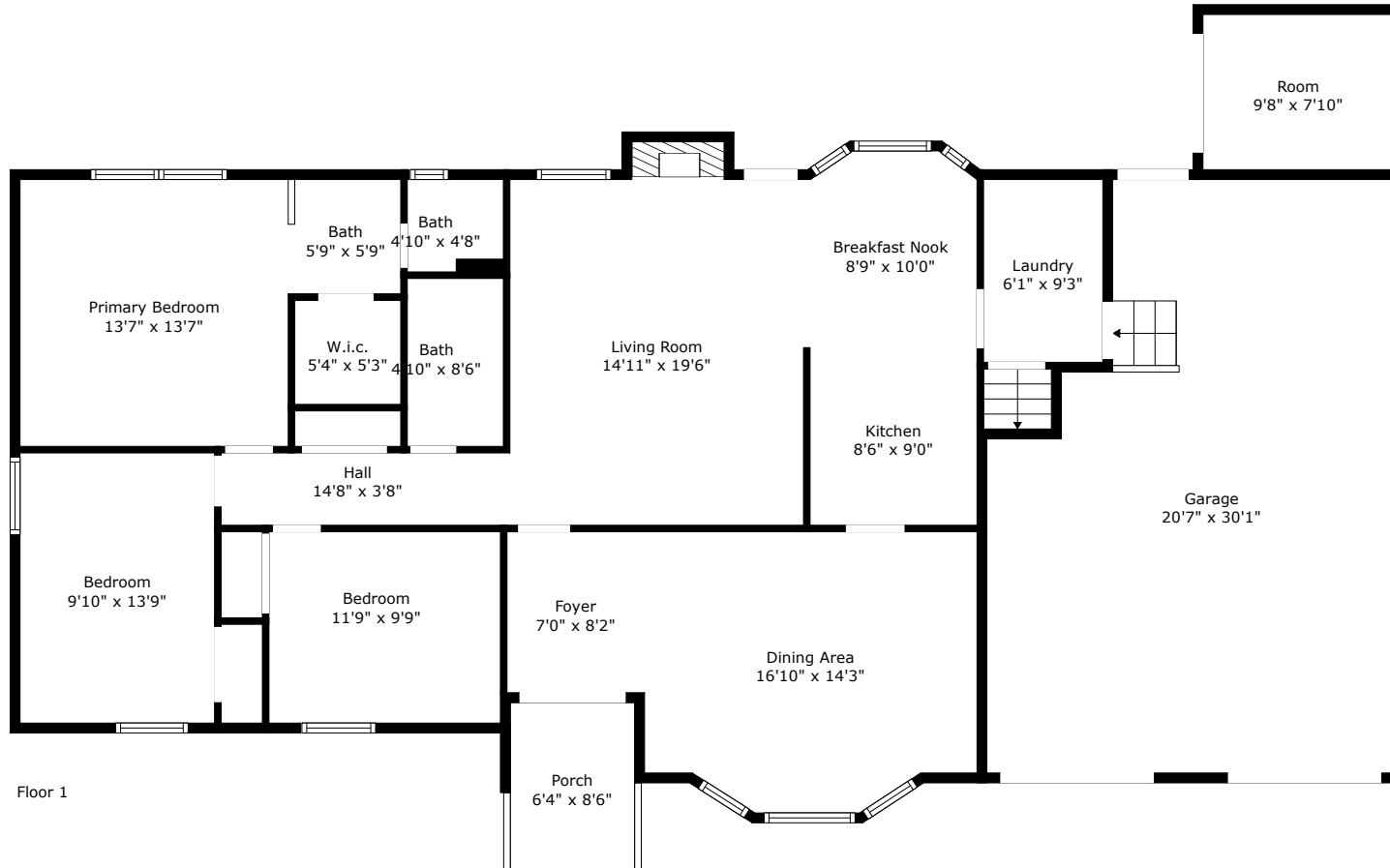


# 412 Whitebark Drive

Tall Pines | Ladson, SC 29456



Floor 2



Floor 1

**TOTAL: 1555 sq. ft**

FLOOR 1: 1555 sq. ft, FLOOR 2: 0 sq. ft

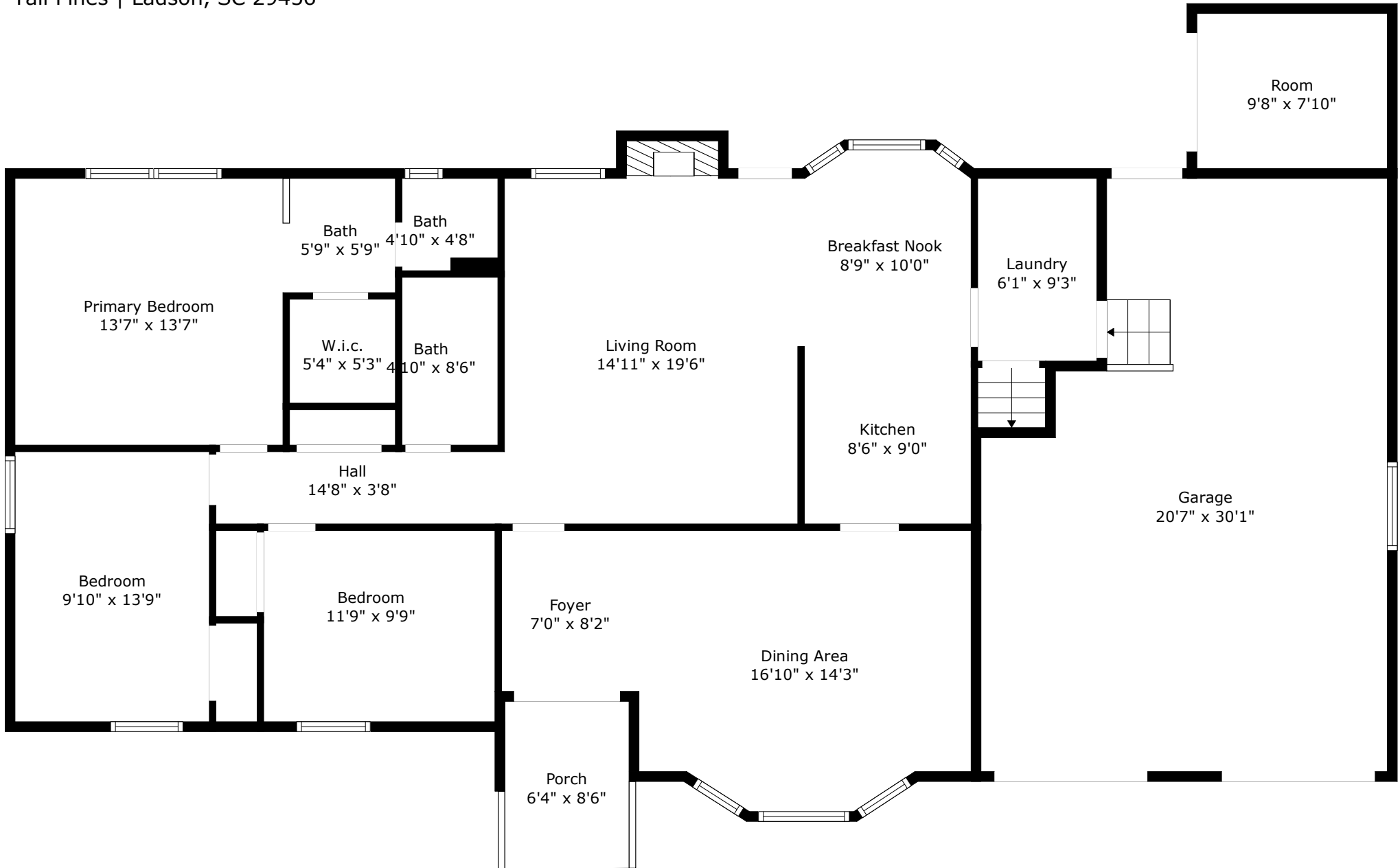
EXCLUDED AREAS: GARAGE: 547 sq. ft, PORCH: 54 sq. ft, ATTIC: 181 sq. ft,  
LOW CEILING: 86 sq. ft

Measurements Are Calculated By Cubicasa Technology. Deemed Highly Reliable But Not Guaranteed.



# 412 Whitebark Drive

Tall Pines | Ladson, SC 29456



Floor 1

**TOTAL: 1555 sq. ft**

FLOOR 1: 1555 sq. ft, FLOOR 2: 0 sq. ft

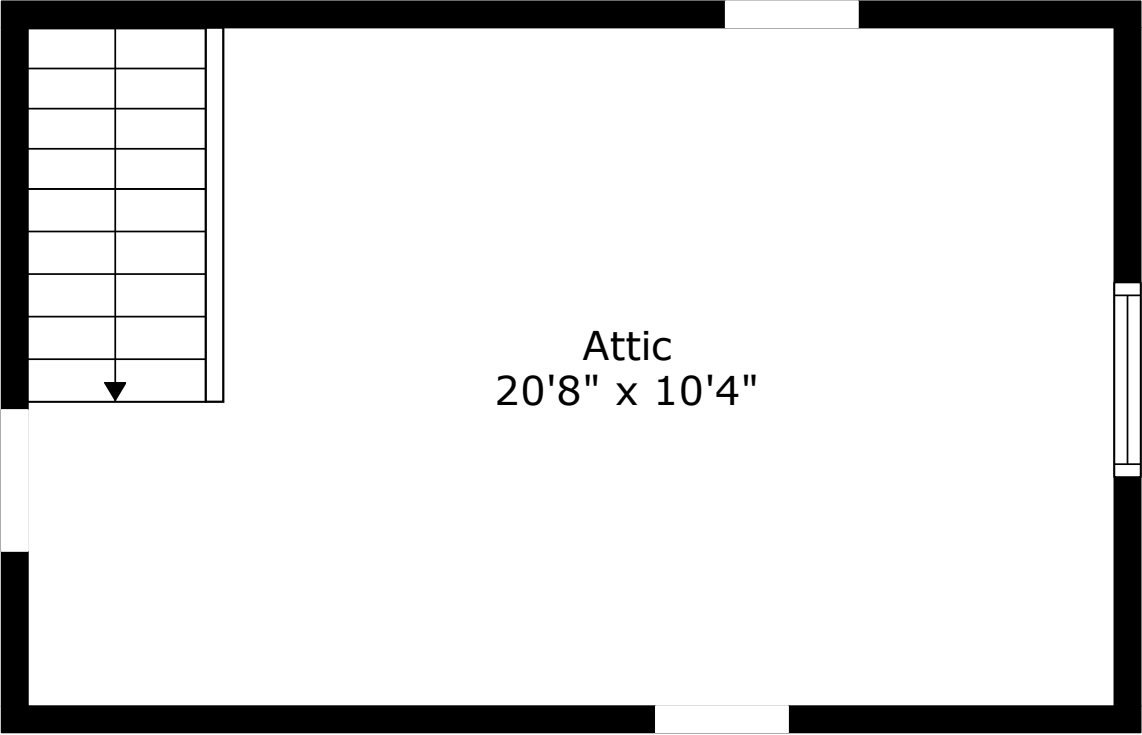
EXCLUDED AREAS: GARAGE: 547 sq. ft, PORCH: 54 sq. ft, ATTIC: 181 sq. ft,  
LOW CEILING: 86 sq. ft

Measurements Are Calculated By Cubicasa Technology. Deemed Highly Reliable But Not Guaranteed.



# 412 Whitebark Drive

Tall Pines | Ladson, SC 29456



Floor 2

**TOTAL: 1555 sq. ft**  
FLOOR 1: 1555 sq. ft, FLOOR 2: 0 sq. ft  
EXCLUDED AREAS: GARAGE: 547 sq. ft, PORCH: 54 sq. ft, ATTIC: 181 sq. ft,  
LOW CEILING: 86 sq. ft

Measurements Are Calculated By Cubicasa Technology. Deemed Highly Reliable But Not Guaranteed.

