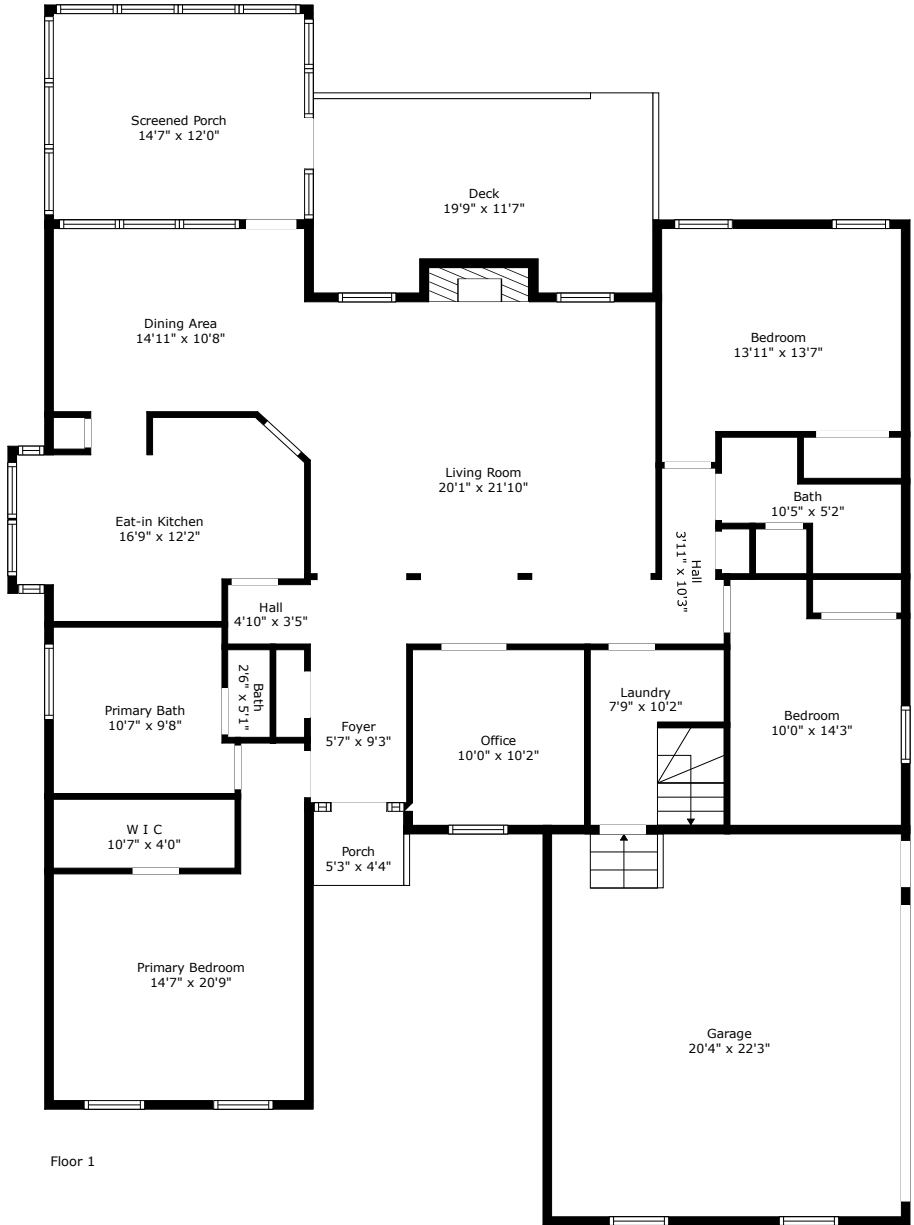
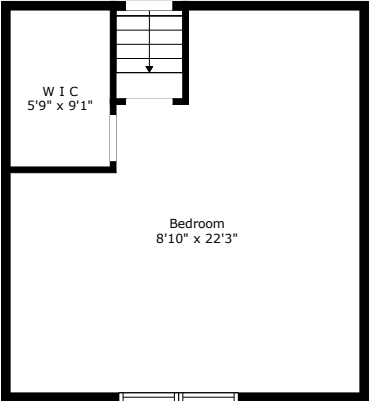


# 309 Jamesbury Road

St Thomas Point | Charleston, SC 29492



Floor 1



Floor 2

**TOTAL: 2239 sq. ft**  
FLOOR 1: 2040 sq. ft, FLOOR 2: 199 sq. ft  
EXCLUDED AREAS: PORCH: 23 sq. ft, DECK: 211 sq. ft, GARAGE: 452 sq. ft,  
FIREPLACE: 9 sq. ft, LOW CEILING: 200 sq. ft, W I C: 53 sq. ft

Measurements Are Calculated By Cubicasa Technology. Deemed Highly Reliable But Not Guaranteed.



**309 Jamesbury Road**  
St Thomas Point | Charleston, SC 29492

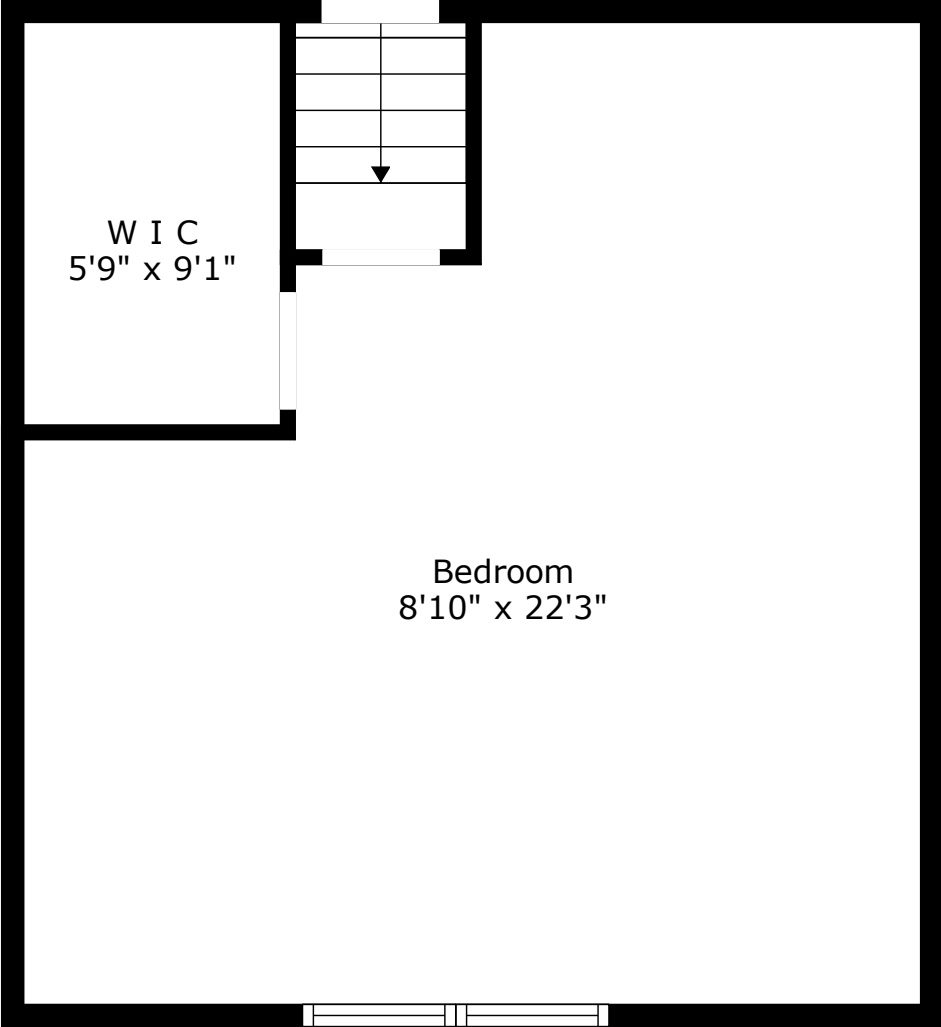


Floor 1

**TOTAL: 2239 sq. ft**  
FLOOR 1: 2040 sq. ft, FLOOR 2: 199 sq. ft  
EXCLUDED AREAS: PORCH: 23 sq. ft, DECK: 211 sq. ft, GARAGE: 452 sq. ft,  
FIREPLACE: 9 sq. ft, LOW CEILING: 200 sq. ft, W I C: 53 sq. ft

Measurements Are Calculated By Cubicasa Technology. Deemed Highly Reliable But Not Guaranteed.





Floor 2

**TOTAL: 2239 sq. ft**  
FLOOR 1: 2040 sq. ft, FLOOR 2: 199 sq. ft  
EXCLUDED AREAS: PORCH: 23 sq. ft, DECK: 211 sq. ft, GARAGE: 452 sq. ft,  
FIREPLACE: 9 sq. ft, LOW CEILING: 200 sq. ft, W I C: 53 sq. ft

Measurements Are Calculated By Cubicasa Technology. Deemed Highly Reliable But Not Guaranteed.

