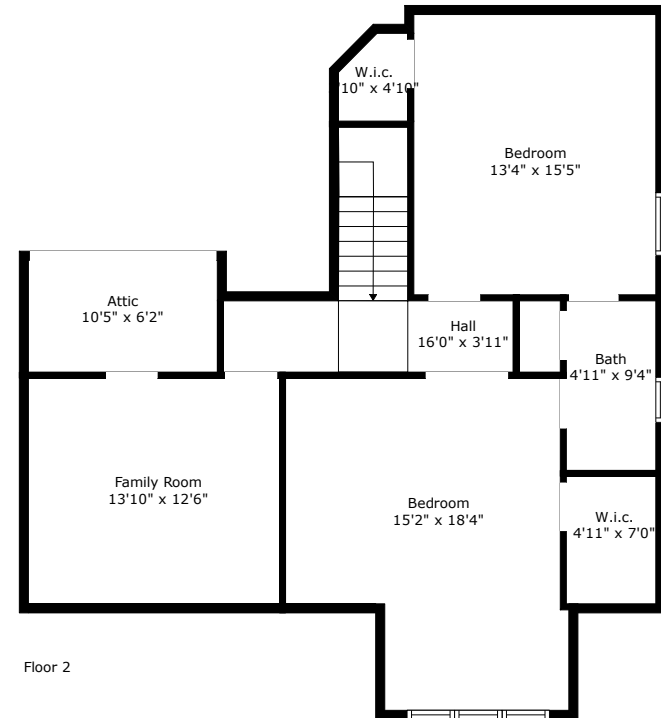
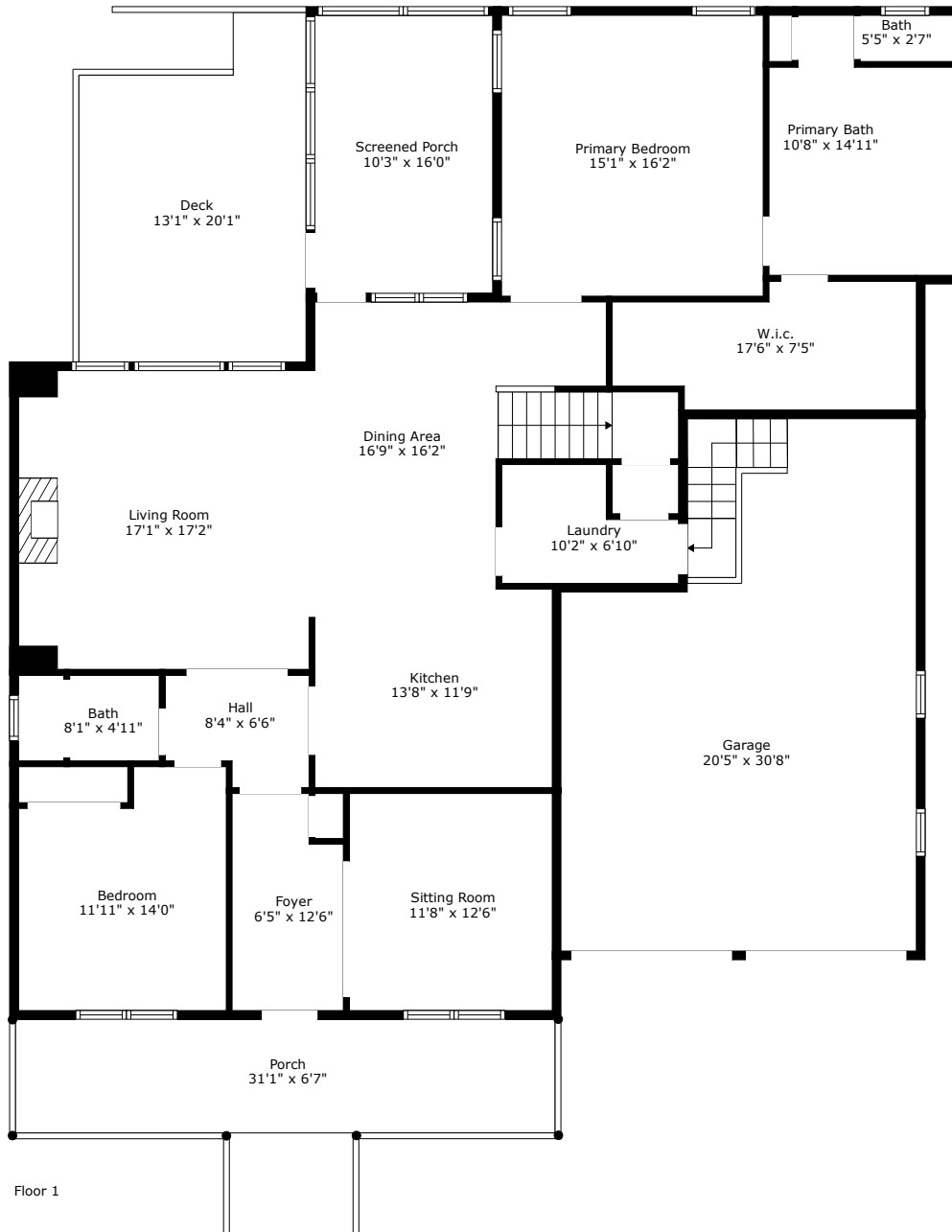


4037 Blackmoor Street

Hamlin Plantation
Mount Pleasant, SC 29466



TOTAL: 2669 sq. ft

FLOOR 1: 1817 sq. ft, FLOOR 2: 852 sq. ft

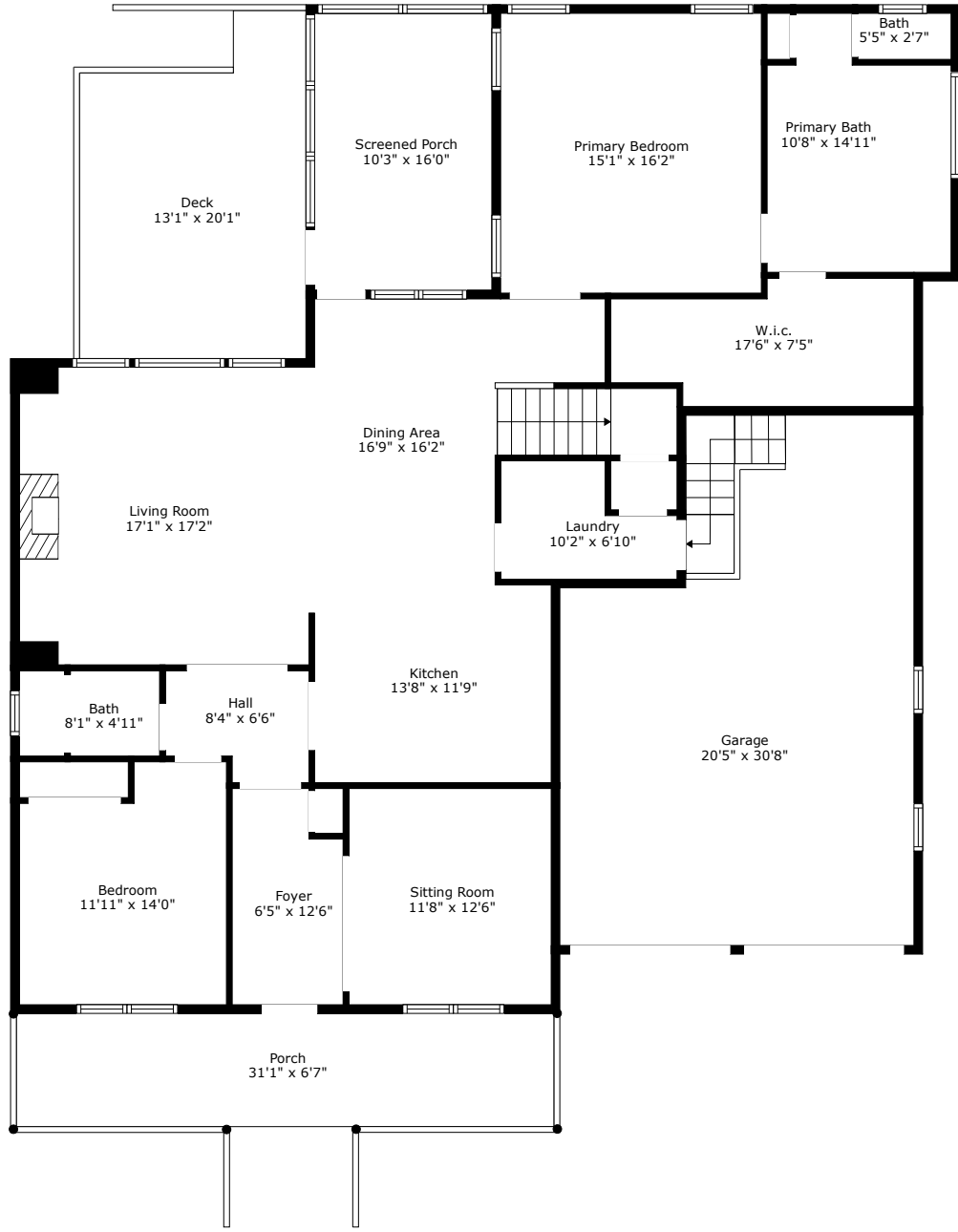
EXCLUDED AREAS: GARAGE: 555 sq. ft, SCREENED PORCH: 164 sq. ft, PORCH: 203 sq. ft,
DECK: 231 sq. ft, ATTIC: 64 sq. ft, LOW CEILING: 17 sq. ft

Measurements Are Calculated By Cubicasa Technology. Deemed Highly Reliable But Not Guaranteed.



4037 Blackmoor Street

Hamlin Plantation
Mount Pleasant, SC 29466



Floor 1

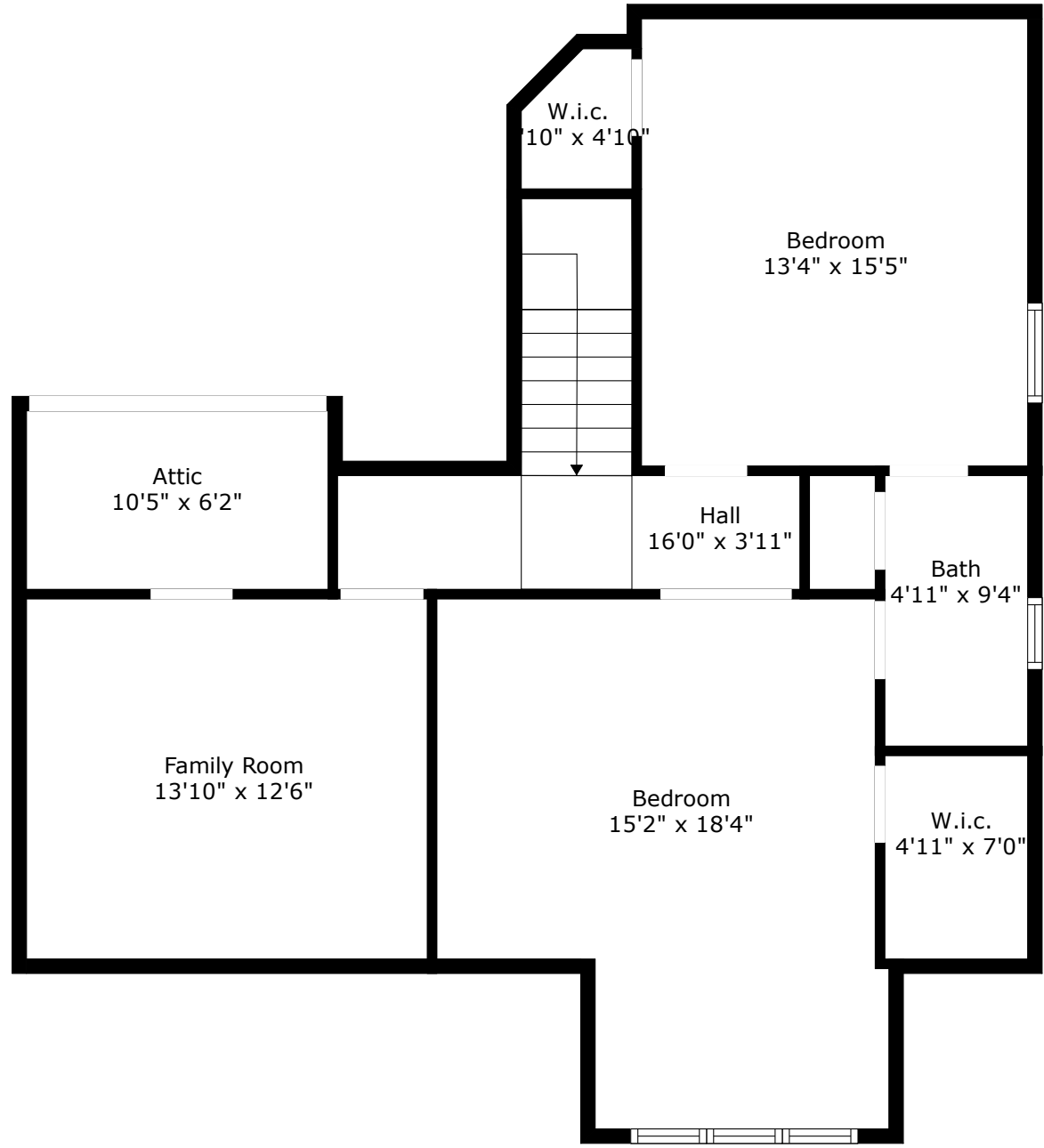
TOTAL: 2669 sq. ft
FLOOR 1: 1817 sq. ft, FLOOR 2: 852 sq. ft
EXCLUDED AREAS: GARAGE: 555 sq. ft, SCREENED PORCH: 164 sq. ft, PORCH: 203 sq. ft,
DECK: 231 sq. ft, ATTIC: 64 sq. ft, LOW CEILING: 17 sq. ft

Measurements Are Calculated By Cubicasa Technology. Deemed Highly Reliable But Not Guaranteed.



4037 Blackmoor Street

Hamlin Plantation
Mount Pleasant, SC 29466



Floor 2

TOTAL: 2669 sq. ft
FLOOR 1: 1817 sq. ft, FLOOR 2: 852 sq. ft
EXCLUDED AREAS: GARAGE: 555 sq. ft, SCREENED PORCH: 164 sq. ft, PORCH: 203 sq. ft,
DECK: 231 sq. ft, ATTIC: 64 sq. ft, LOW CEILING: 17 sq. ft

Measurements Are Calculated By Cubicasa Technology. Deemed Highly Reliable But Not Guaranteed.

