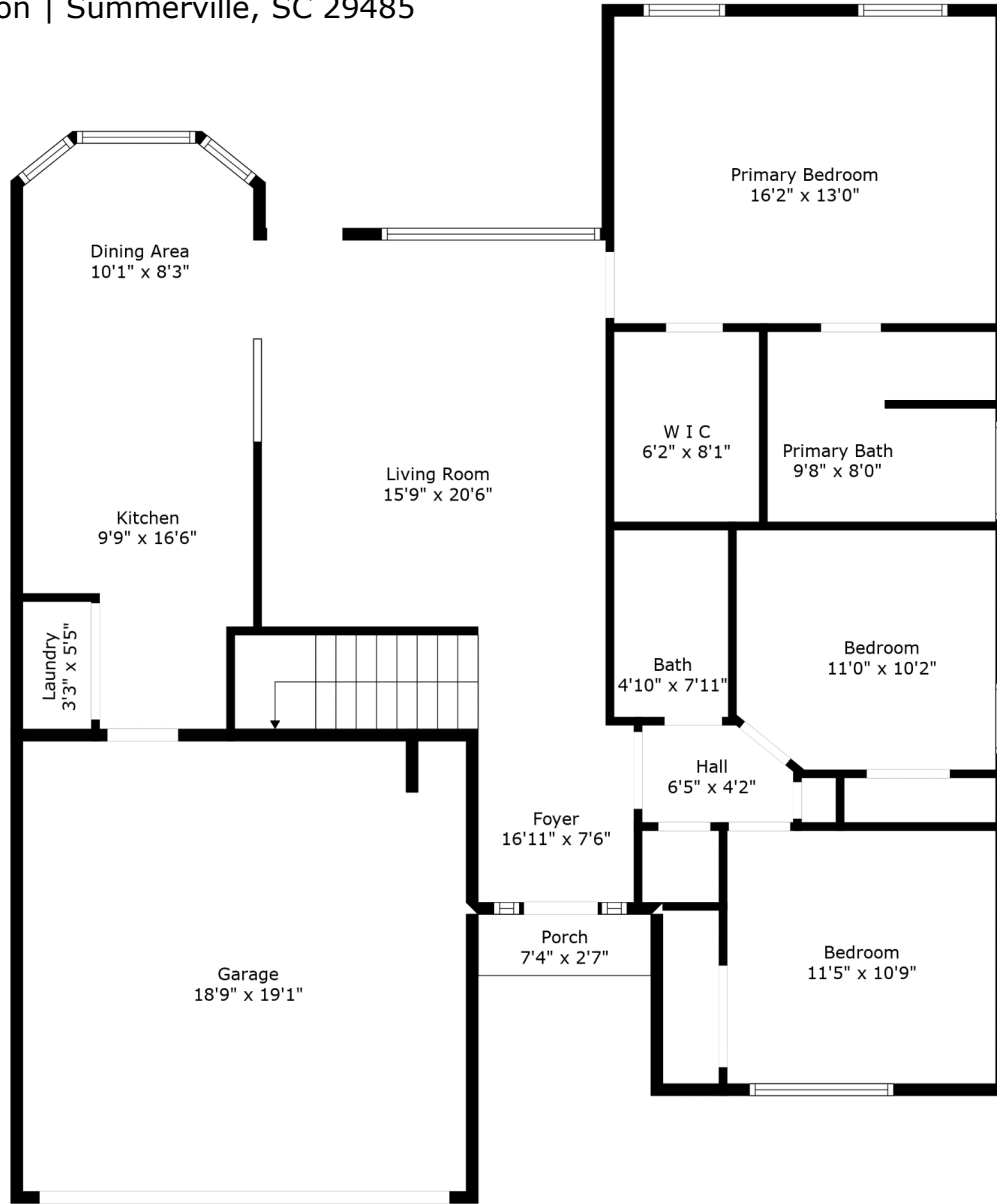
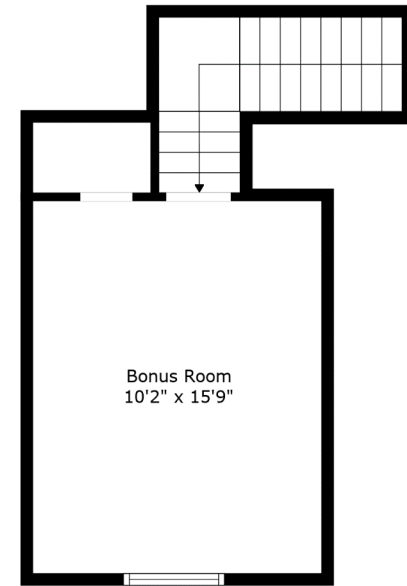


4833 Oak Leaf Road

Wescott Plantation | Summerville, SC 29485



Floor 1



Floor 2

TOTAL: 1542 sq. ft

FLOOR 1: 1312 sq. ft, FLOOR 2: 230 sq. ft

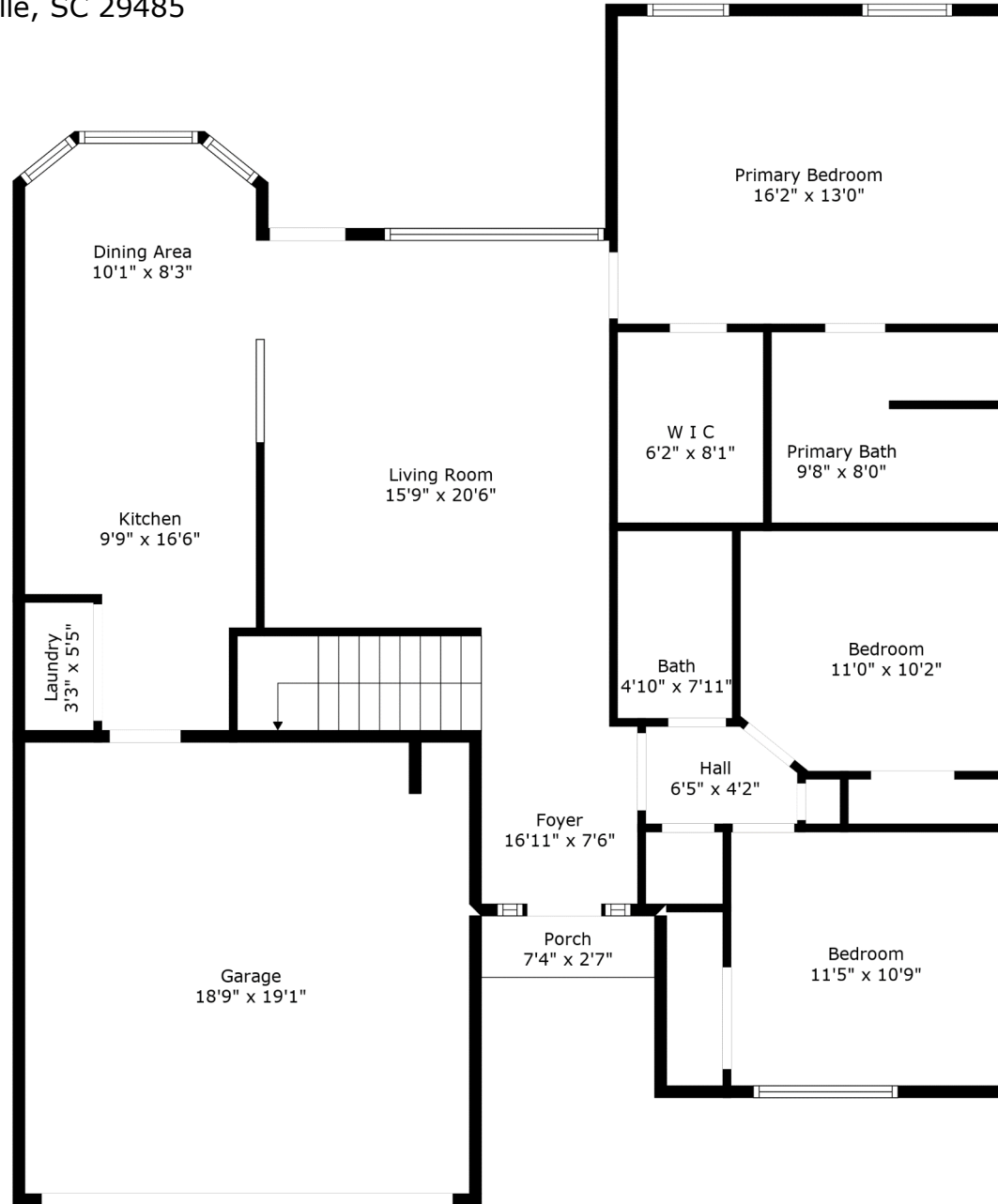
EXCLUDED AREAS: GARAGE: 357 sq. ft, PORCH: 19 sq. ft, LOW CEILING: 35 sq. ft

Measurements Are Calculated By Cubicasa Technology. Deemed Highly Reliable But Not Guaranteed.



4833 Oak Leaf Road

Wescott Plantation | Summerville, SC 29485



Floor 1

TOTAL: 1542 sq. ft

FLOOR 1: 1312 sq. ft, FLOOR 2: 230 sq. ft

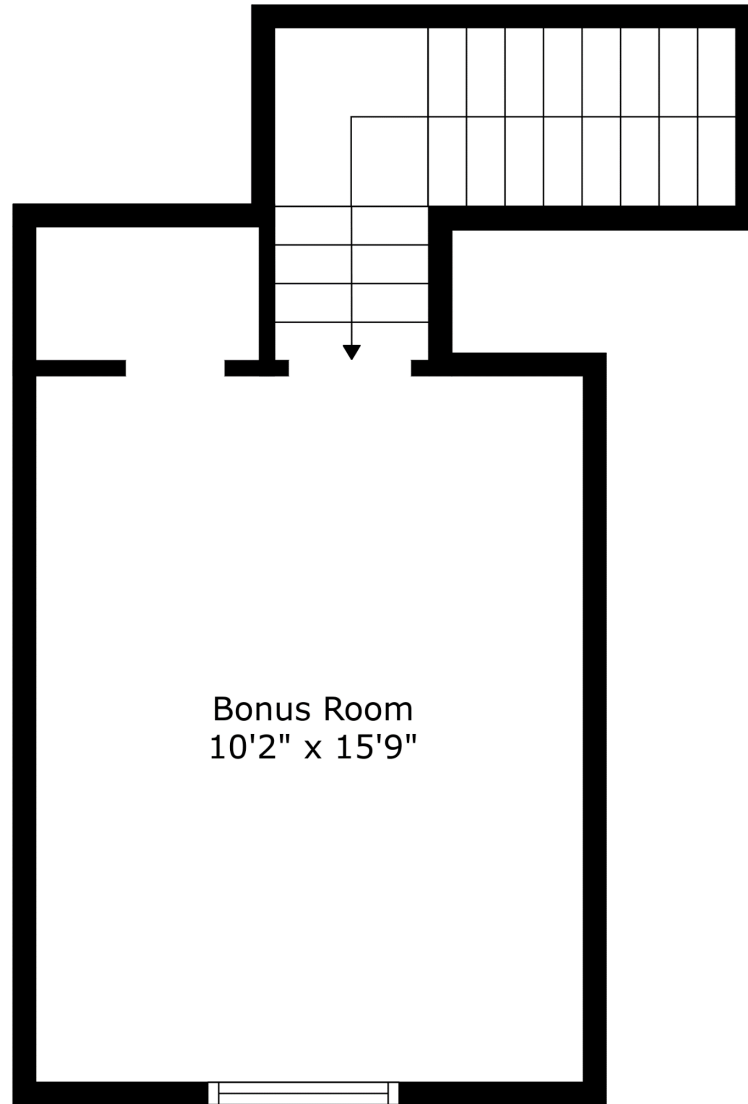
EXCLUDED AREAS: GARAGE: 357 sq. ft, PORCH: 19 sq. ft, LOW CEILING: 35 sq. ft

Measurements Are Calculated By Cubicasa Technology. Deemed Highly Reliable But Not Guaranteed.



4833 Oak Leaf Road

Wescott Plantation | Summerville, SC 29485



Floor 2

TOTAL: 1542 sq. ft

FLOOR 1: 1312 sq. ft, FLOOR 2: 230 sq. ft

EXCLUDED AREAS: GARAGE: 357 sq. ft, PORCH: 19 sq. ft, LOW CEILING: 35 sq. ft

Measurements Are Calculated By Cubicasa Technology. Deemed Highly Reliable But Not Guaranteed.

