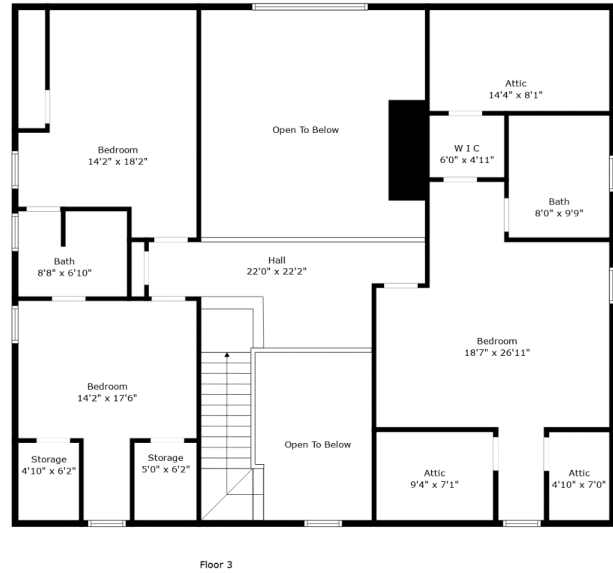
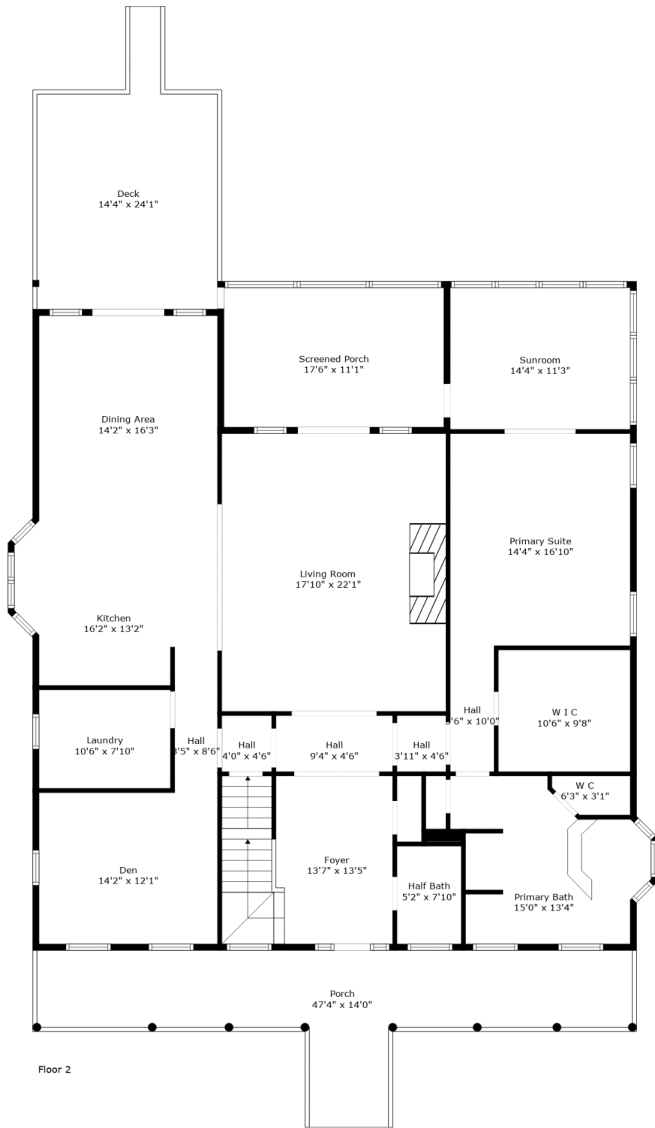
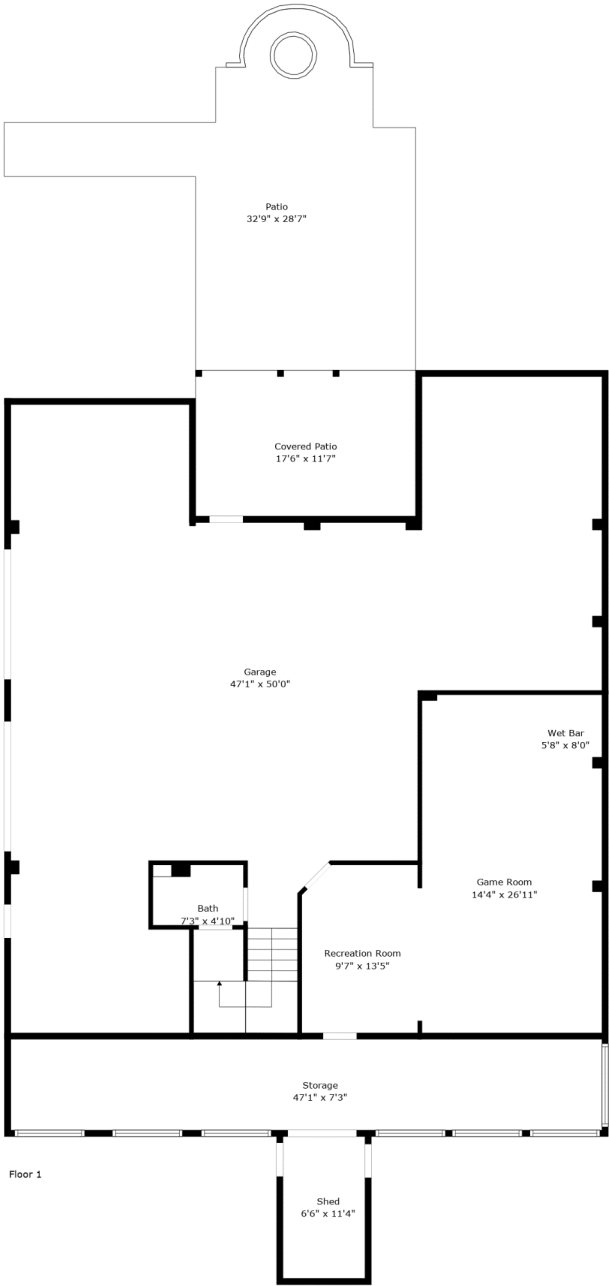


2675 Burden Creek Road Ext

Stono Pointe | Johns Island, SC 29455



TOTAL: 3560 sq. ft
 Below Ground: 0 sq. ft, FLOOR 2: 2427 sq. ft, FLOOR 3: 1133 sq. ft
 EXCLUDED AREAS: STORAGE: 341 sq. ft, SHED: 74 sq. ft, GARAGE: 1671 sq. ft,
 COVERED PATIO: 203 sq. ft, PATIO: 497 sq. ft, RECREATION ROOM: 125 sq. ft,
 WET BAR: 45 sq. ft, GAME ROOM: 341 sq. ft, DECK: 263 sq. ft,
 PORCH: 340 sq. ft, OPEN TO BELOW: 452 sq. ft, LOW CEILING: 177 sq. ft,
 ATTIC: 150 sq. ft

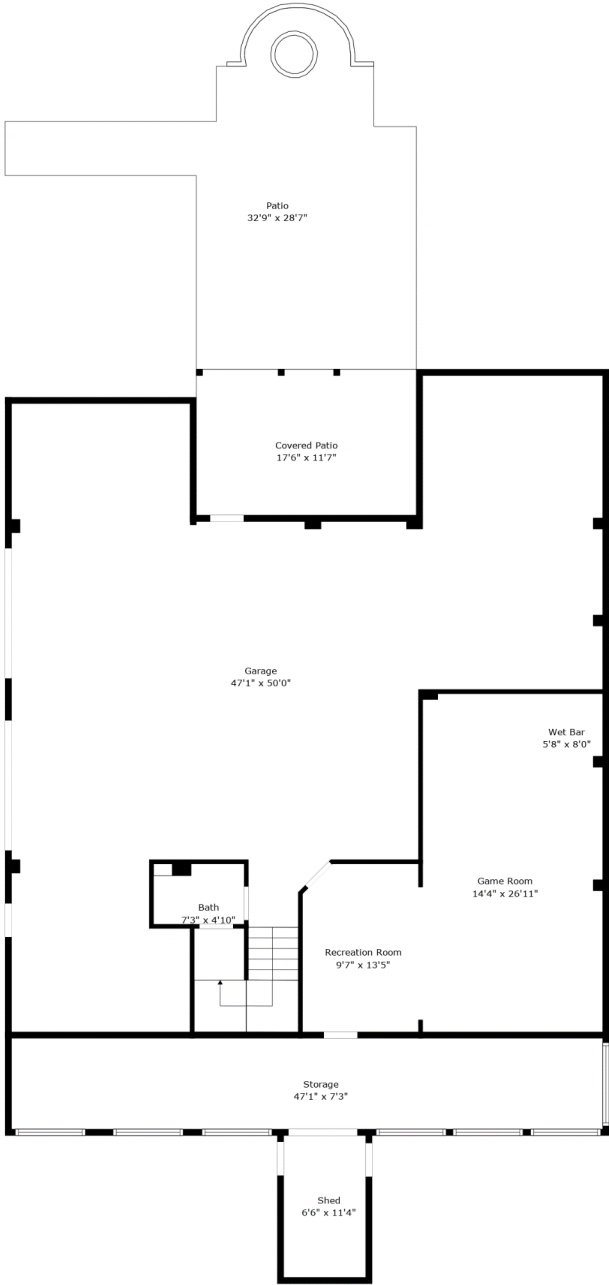
Measurements Are Calculated By Cubicasa Technology. Deemed Highly Reliable But Not Guaranteed.



2675 Burden Creek Road Ext

Stono Pointe | Johns Island, SC 29455

Floor 1



TOTAL: 3560 sq. ft

Below Ground: 0 sq. ft, FLOOR 2: 2427 sq. ft, FLOOR 3: 1133 sq. ft
EXCLUDED AREAS: STORAGE: 341 sq. ft, SHED: 74 sq. ft, GARAGE: 1671 sq. ft,
COVERED PATIO: 203 sq. ft, PATIO: 497 sq. ft, RECREATION ROOM: 125 sq. ft,
WET BAR: 45 sq. ft, GAME ROOM: 341 sq. ft, DECK: 263 sq. ft,
PORCH: 340 sq. ft, OPEN TO BELOW: 452 sq. ft, LOW CEILING: 177 sq. ft,
ATTIC: 150 sq. ft

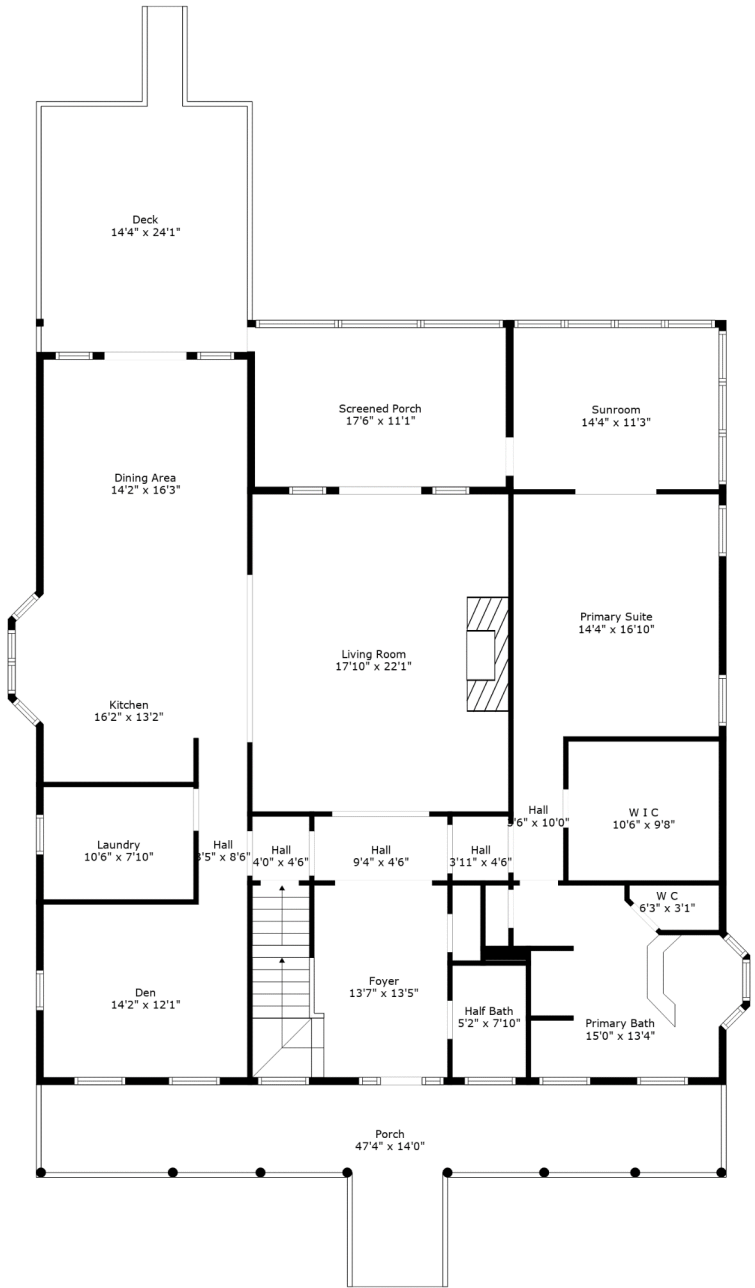
Measurements Are Calculated By Cubicasa Technology. Deemed Highly Reliable But Not Guaranteed.



2675 Burden Creek Road Ext

Stono Pointe | Johns Island, SC 29455

Floor 2



TOTAL: 3560 sq. ft

Below Ground: 0 sq. ft, FLOOR 2: 2427 sq. ft, FLOOR 3: 1133 sq. ft
EXCLUDED AREAS: STORAGE: 341 sq. ft, SHED: 74 sq. ft, GARAGE: 1671 sq. ft,
COVERED PATIO: 203 sq. ft, PATIO: 497 sq. ft, RECREATION ROOM: 125 sq. ft,
WET BAR: 45 sq. ft, GAME ROOM: 341 sq. ft, DECK: 263 sq. ft,
PORCH: 340 sq. ft, OPEN TO BELOW: 452 sq. ft, LOW CEILING: 177 sq. ft,
ATTIC: 150 sq. ft

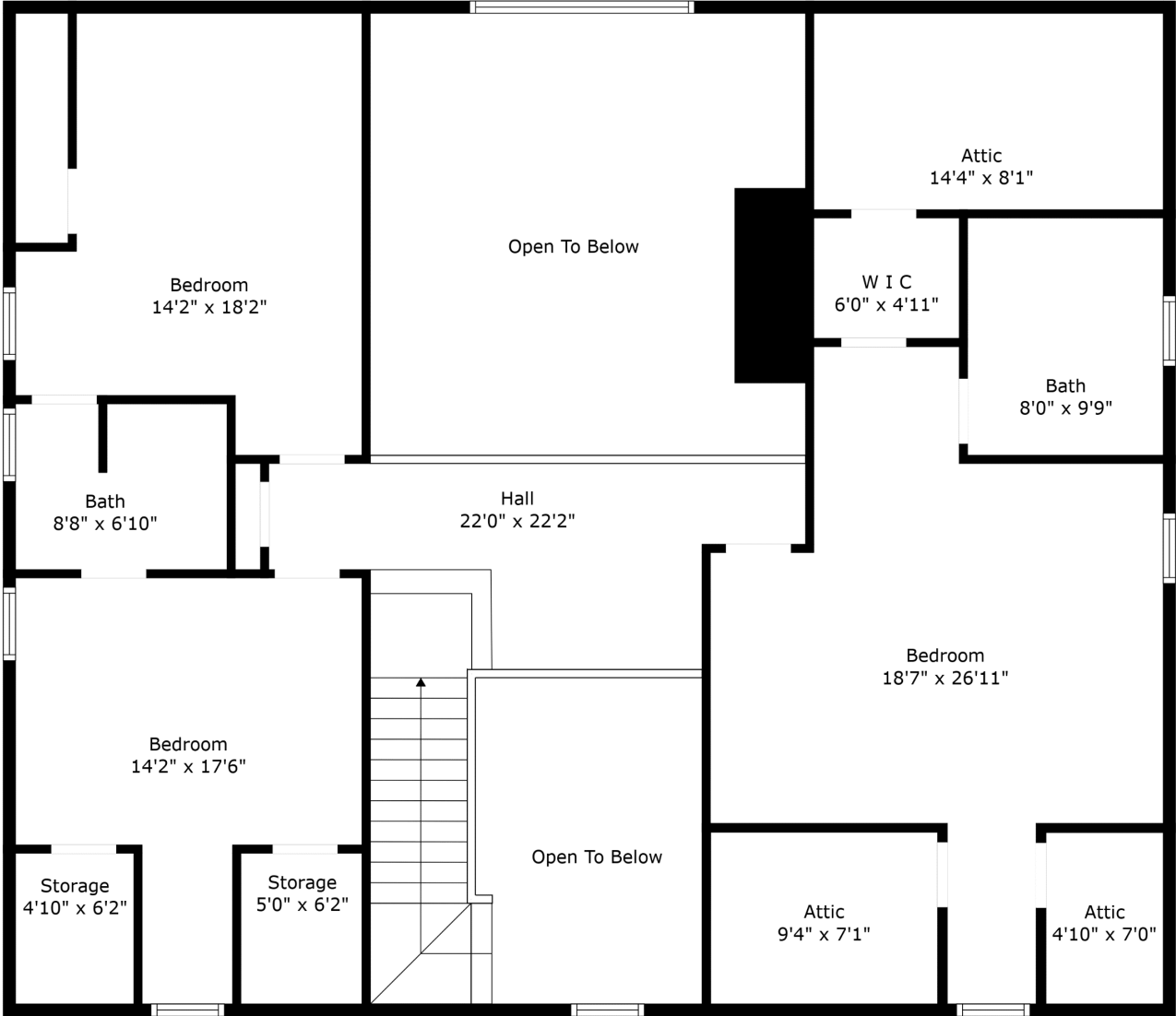
Measurements Are Calculated By Cubicasa Technology. Deemed Highly Reliable But Not Guaranteed.



2675 Burden Creek Road Ext

Stono Pointe | Johns Island, SC 29455

Floor 3



TOTAL: 3560 sq. ft

Below Ground: 0 sq. ft, FLOOR 2: 2427 sq. ft, FLOOR 3: 1133 sq. ft,
EXCLUDED AREAS: STORAGE: 341 sq. ft, SHED: 74 sq. ft, GARAGE: 1671 sq. ft,
COVERED PATIO: 203 sq. ft, PATIO: 497 sq. ft, RECREATION ROOM: 125 sq. ft,
WET BAR: 45 sq. ft, GAME ROOM: 341 sq. ft, DECK: 263 sq. ft,
PORCH: 340 sq. ft, OPEN TO BELOW: 452 sq. ft, LOW CEILING: 177 sq. ft,
ATTIC: 150 sq. ft

Measurements Are Calculated By Cubicasa Technology. Deemed Highly Reliable But Not Guaranteed.

