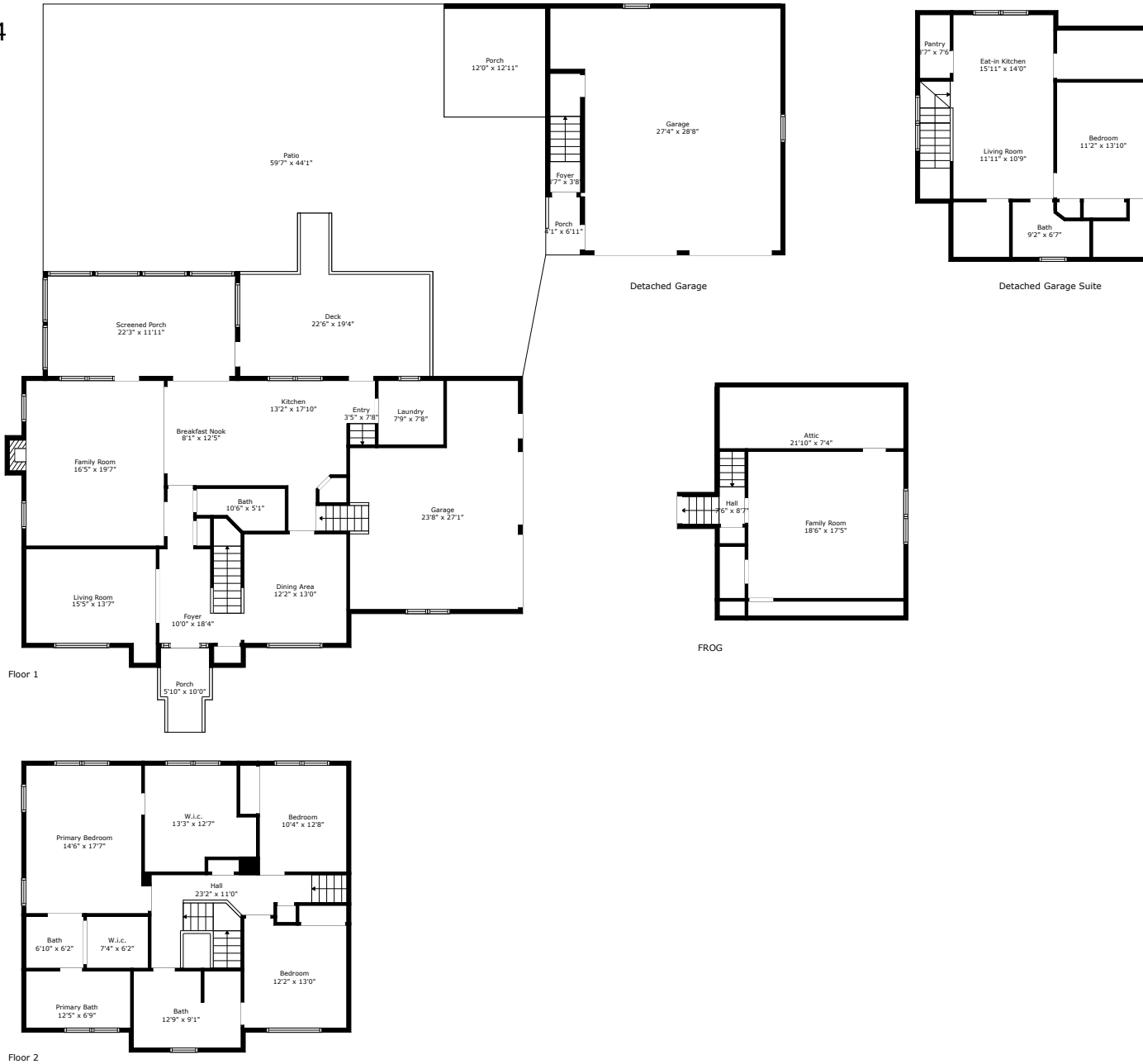


# 2570 Marsh Creek Drive

Ashland Plantation  
Charleston, SC 29414



**TOTAL: 3637 sq. ft**

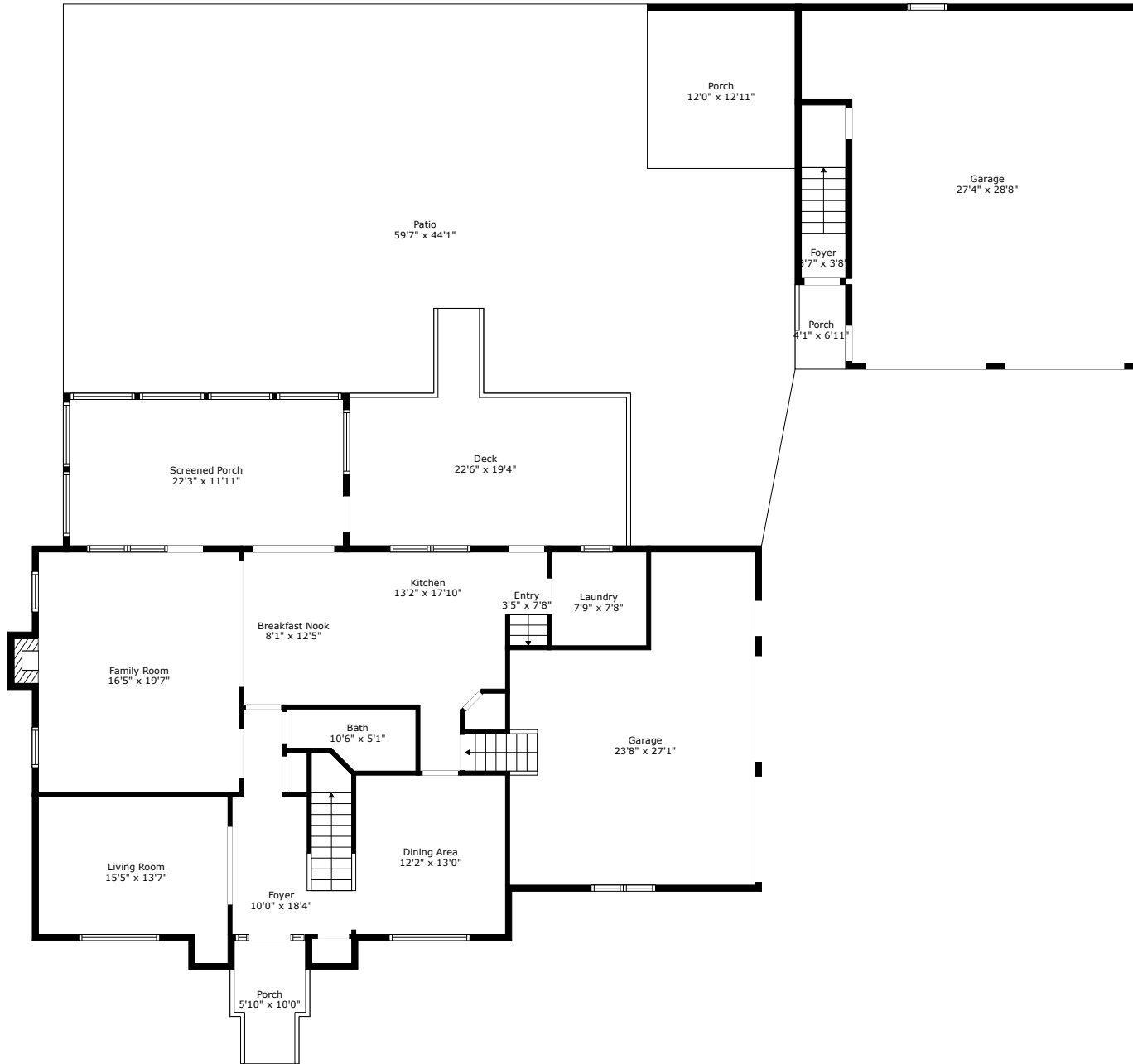
FLOOR 1: 1325 sq. ft, FLOOR 2: 1098 sq. ft, FLOOR 3: 1214 sq. ft  
EXCLUDED AREAS: GARAGE: 1160 sq. ft, SCREENED PORCH: 266 sq. ft, PORCH: 240 sq. ft,  
DECK: 312 sq. ft, PATIO: 1845 sq. ft, FIREPLACE: 5 sq. ft,  
LOW CEILING: 192 sq. ft, ATTIC: 56 sq. ft

Measurements Are Calculated by Cubicasa Technology. Deemed Highly Reliable But Not Guaranteed.



# 2570 Marsh Creek Drive

Ashland Plantation  
Charleston, SC 29414



Floor 1

**TOTAL: 3637 sq. ft**

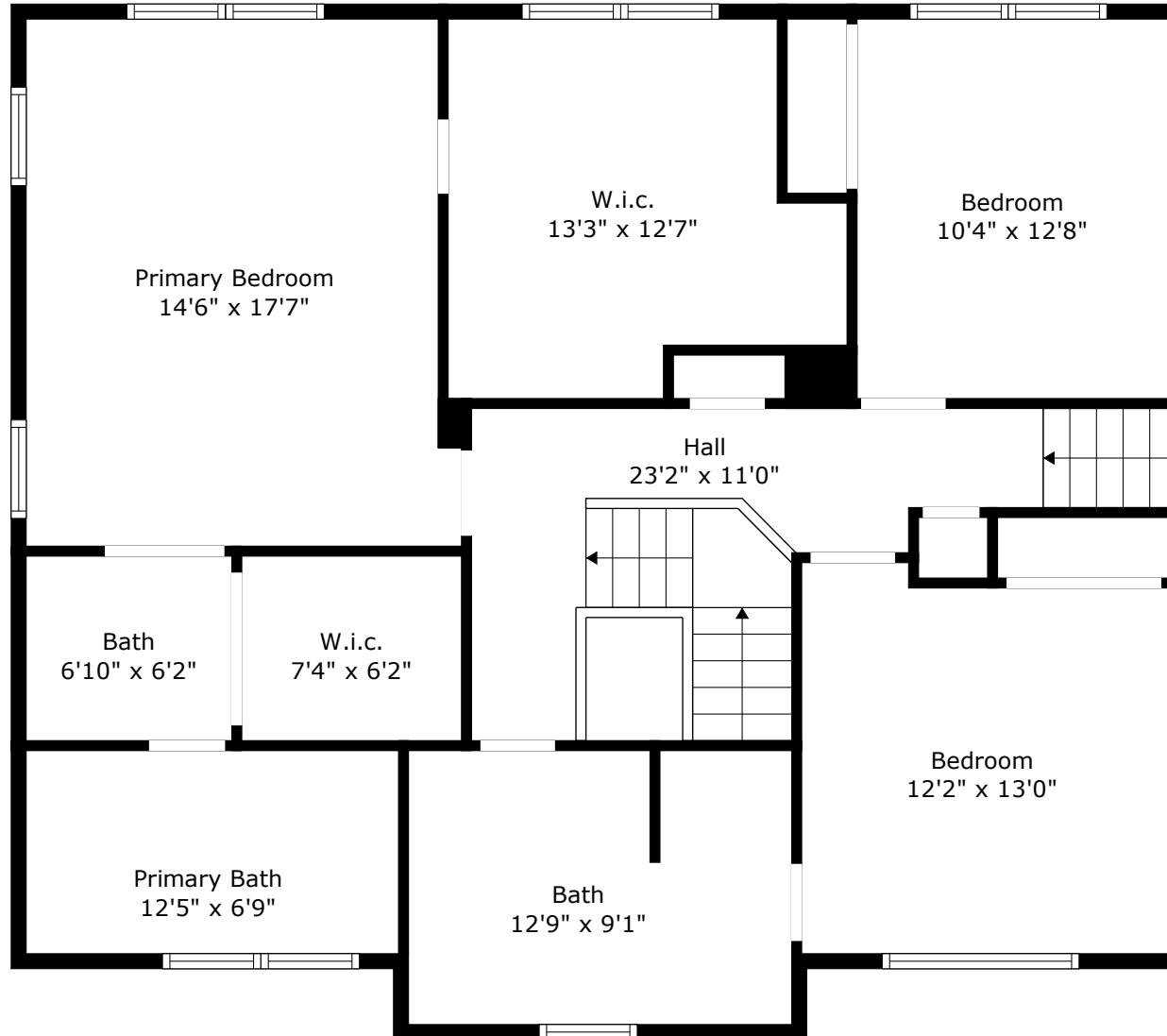
FLOOR 1: 1325 sq. ft, FLOOR 2: 1098 sq. ft, FLOOR 3: 1214 sq. ft  
EXCLUDED AREAS: GARAGE: 1160 sq. ft, SCREENED PORCH: 266 sq. ft, PORCH: 240 sq. ft,  
DECK: 312 sq. ft, PATIO: 1845 sq. ft, FIREPLACE: 5 sq. ft,  
LOW CEILING: 192 sq. ft, ATTIC: 56 sq. ft

Measurements Are Calculated By Cubicasa Technology. Deemed Highly Reliable But Not Guaranteed.



# 2570 Marsh Creek Drive

Ashland Plantation  
Charleston, SC 29414



Floor 2

**TOTAL: 3637 sq. ft**

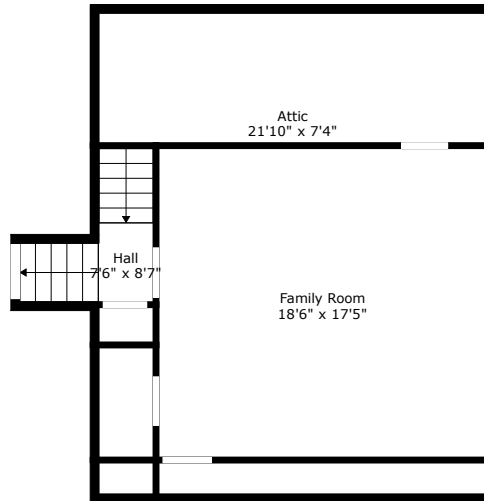
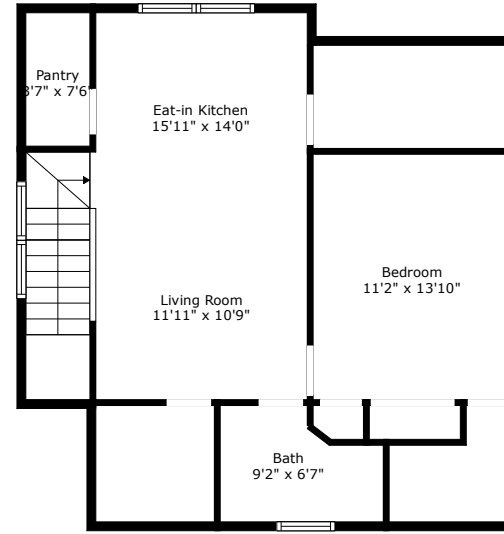
FLOOR 1: 1325 sq. ft, FLOOR 2: 1098 sq. ft, FLOOR 3: 1214 sq. ft  
EXCLUDED AREAS: GARAGE: 1160 sq. ft, SCREENED PORCH: 266 sq. ft, PORCH: 240 sq. ft,  
DECK: 312 sq. ft, PATIO: 1845 sq. ft, FIREPLACE: 5 sq. ft,  
LOW CEILING: 192 sq. ft, ATTIC: 56 sq. ft

Measurements Are Calculated By Cubicasa Technology. Deemed Highly Reliable But Not Guaranteed.



# 2570 Marsh Creek Drive

Ashland Plantation  
Charleston, SC 29414



## FROG & Detached Suite

**TOTAL: 3637 sq. ft**

FLOOR 1: 1325 sq. ft, FLOOR 2: 1098 sq. ft, FLOOR 3: 1214 sq. ft  
EXCLUDED AREAS: GARAGE: 1160 sq. ft, SCREENED PORCH: 266 sq. ft, PORCH: 240 sq. ft,  
DECK: 312 sq. ft, PATIO: 1845 sq. ft, FIREPLACE: 5 sq. ft,  
LOW CEILING: 192 sq. ft, ATTIC: 56 sq. ft

Measurements Are Calculated By Cubicasa Technology. Deemed Highly Reliable But Not Guaranteed.

